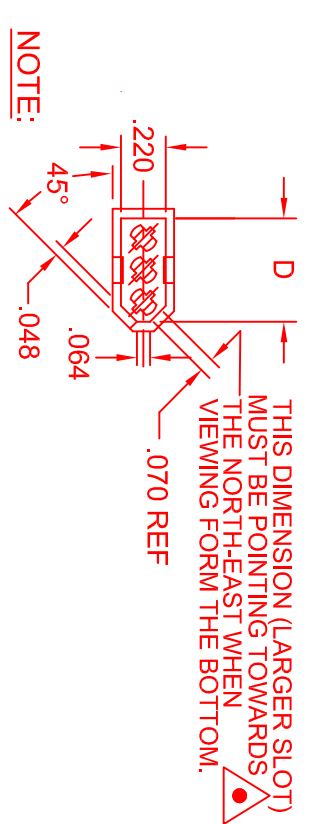
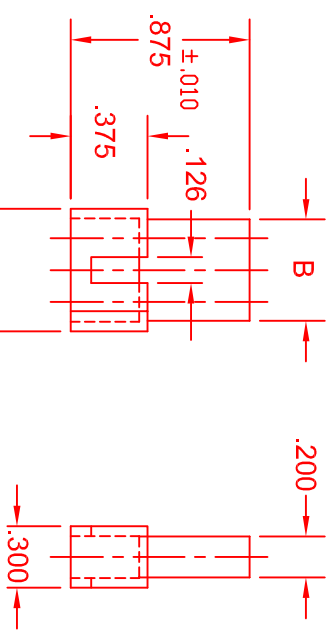
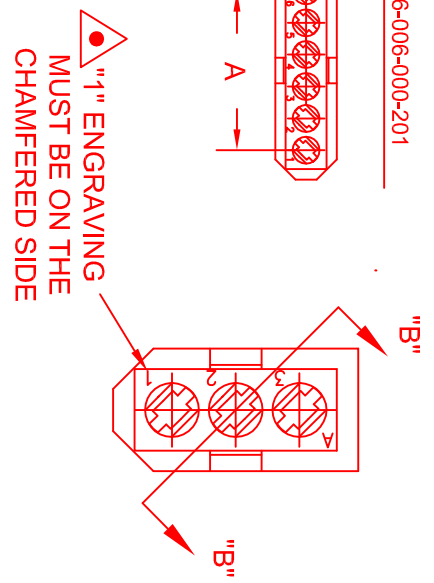
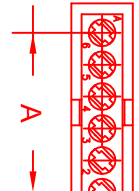
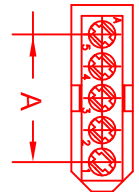
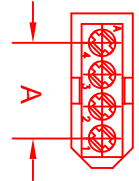
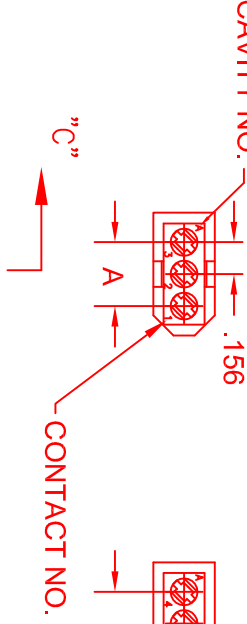


556-003-000-201 ±.002
CAVITY NO. .156

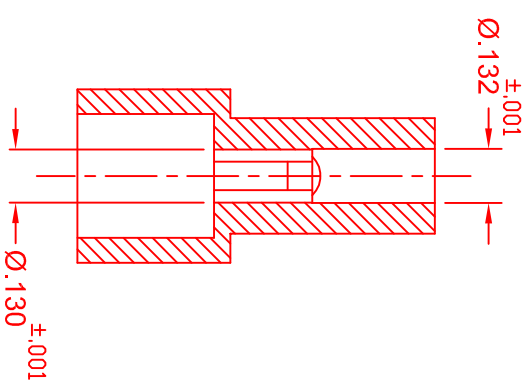
556-004-000-201

556-005-000-201

556-006-000-201



- 1) MATERIAL: NYLON 6, COLOR: NATURAL
- 2) THIS PLUG INSULATOR IS DESIGNED FOR MATING WITH RECEPTACLE P/N 556-003-000-102, 556-004-000-102, 556-005-000-102 AND 556-006-000-102
- 3) ▲ INDICATES CRITICAL NOTE OR DIMENSION.



PART NUMBER	TOTAL NUMBER OF CONTACTS	"A" ±.002	"B" ±.010	"C" ±.010	"D" ±.015 - .000
556-003-000-201	3	.312	.495	.600	.505
556-004-000-201	4	.468	.651	.756	.661
556-005-000-201	5	.624	.807	.912	.817
556-006-000-201	6	.780	.963	1.068	.973

TOLERANCE UNLESS NOTED	DIMENSION	TOLERANCE
	.00	± .005
	.000	± .000
	ANGULAR	+ 0°30'

556 SERIES PLUG INSULATOR

EDAC INC. TORONTO, ONTARIO CANADA
YOUR CONNECTION TO QUALITY & SERVICE

THESE DRAWINGS AND SPECIFICATIONS ARE THE PROPERTY OF EDAC INC. AND SHALL BE USED AS THE BASIS FOR THE MANUFACTURE OR SALE OF APPARATUS WITHOUT WRITTEN PERMISSION.

RECOMMENDED DISPOSITION OF STOCK (PRIOR ISSUE PARTS)

SCRAP INSPECT

REWORK USE AS IS

SEE ENGINEERING MEMO

ISSUE NUMBER

ORIGINAL (1)

ACAD REFERENCE NO. 55621001

DRAWN: R.STAMONICA DATE: JULY 09,2012

CHECKED:

SCALE: SHEET 1 OF 2

SALES-556-210-001 ISSUE 1