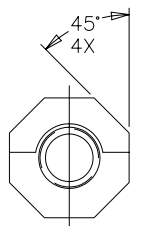


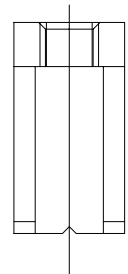
PRODUCT NO.	DIM A	DIM B
77030-001	.065/1.65	.310/7.87
77030-002	.450/11.43	.770/19.56
77030-001LF	.065/1.65	.310/7.87
77030-002LF	.450/11.43	.770/19.56

NOTE 2

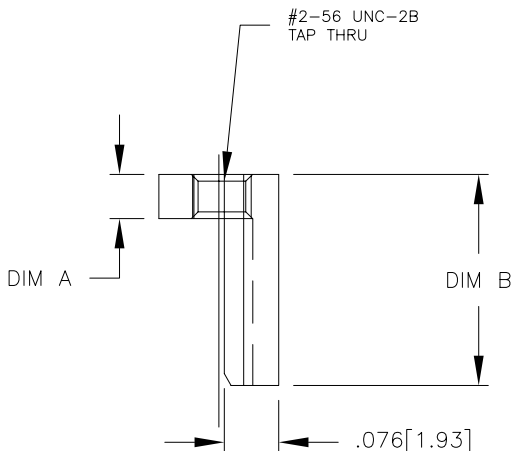
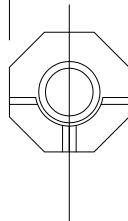
NOTE 2



.073 [1.85] 8X



.176 [4.47] 4X



NOTES:

- ① MATERIAL: STAINLESS STEEL NO.416
- ② THIS PRODUCT MEETS EUROPEAN UNION DIRECTIVES AND OTHER COUNTRY REGULATIONS AS DESCRIBED IN GS-22-008.

mat'l. code		surface		tolerance		projection		product family	
NOTE 1		ISO 1302 ✓		ISO 406 ISO 1101		⊕		HPC	
ltr	ecn no	dr	date	tolerances unless otherwise specified		INCH/MM		title	
B	14184	JRL	10/14/87	angles	linear	.XX±.01/.3		8 POSITION SCREW TYPE	
C	v90010	SAR	1/15/99			.XXX±.005/.13		ORIENTATION INSERT	
D	v00717	LSS	3/22/00	0'±2'		.XXX±.0020/.051		scale 1:1	
E	v05-0643	DCH	7/8/05	dr	D.HORCHLER	7/8/05		dwg no	
F	M06-0283	MHT	7/27/06	enfr	D.HORCHLER	7/8/05		sheet 1 of 1 size	
				chr	T.BREWBAKER	7/8/05		77030	
				appd	D.HORCHLER	7/8/05		A3	
sheet index	revision	F						type Product Customer Drawing	
	sheet	1							



Copyright FCI

FCIconnect.com