

SAFETY ORGANIZATION(S):

THIS FILTER HAS BEEN FORMALLY RECOGNIZED, CERTIFIED OR APPROVED BY THE LISTED AGENCY, THEREFORE, ALL TEST/REQUIREMENTS SPECIFIED IN THE LATEST REVISION OF THE FOLLOWING AGENCY STANDARDS HAVE BEEN MET.

- UL RECOGNIZED
- CSA CERTIFIED
- VDE APPROVED
- SEMKO APPROVED

OPERATING SPECIFICATIONS:

- LINE VOLTAGE/CURRENT, 6 AMP., 120/250 VAC
- LINE FREQUENCY, 50-60Hz

- MAX. LEAKAGE CURRENT, EACH LINE TO GROUND
- OPERATING AMBIENT TEMP. RANGE, -10°C TO +40°C @ RATED CURRENT, I_r

IN AN AMBIENT, T_a, HIGHER THAN 40°C, THE MAXIMUM OPERATING CURRENT, I_o, IS AS FOLLOWS:

$$I_o = I_r \sqrt{\frac{95 - T_a}{45}}$$

RELIABILITY SPECIFICATIONS:

- STORAGE TEMPERATURE, -40°C TO +85°C
- HUMIDITY, 21 DAYS @ 40°C 95% RH
- CURRENT OVERLOAD TEST, 6 TIMES RATED CURRENT FOR 8 SECONDS

TEST SPECIFICATIONS:

- INDUCTANCE, .465 mH NOMINAL
- CAPACITANCE, (MEASURED @ 1 KHZ, 0.25 VAC MAX., 25°C ±1°C)
- LINE TO GROUND, .003µF ±20%
- LINE TO LINE, .047µF ±20%
- DISCHARGE RESISTOR, 1.5 MΩ
- LINE/GROUND AND LINE/LINE INSULATION RESISTANCE 6000 MΩ (MIN) AT 100 VDC
- (W/O DISCHARGE RESISTOR) 20°C AND 50% RH

RECOMMENDED RECEIVING INSPECTION HIPOTL:

- LINE TO GROUND, 2250 VDC FOR 1 MINUTE
- LINE TO LINE, 1450 VDC FOR 1 MINUTE

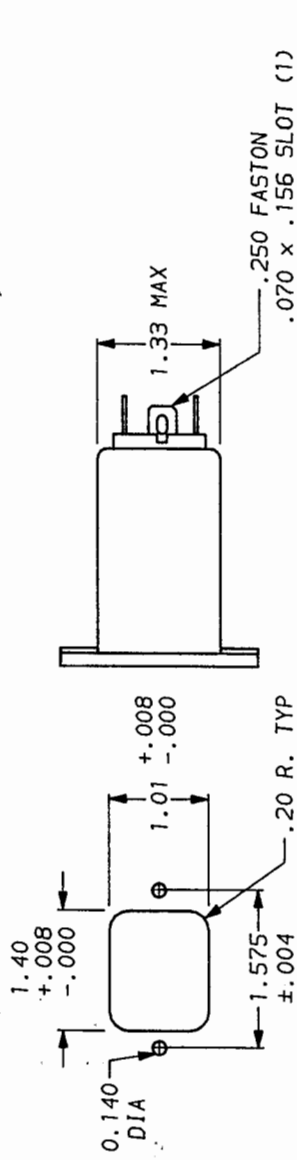
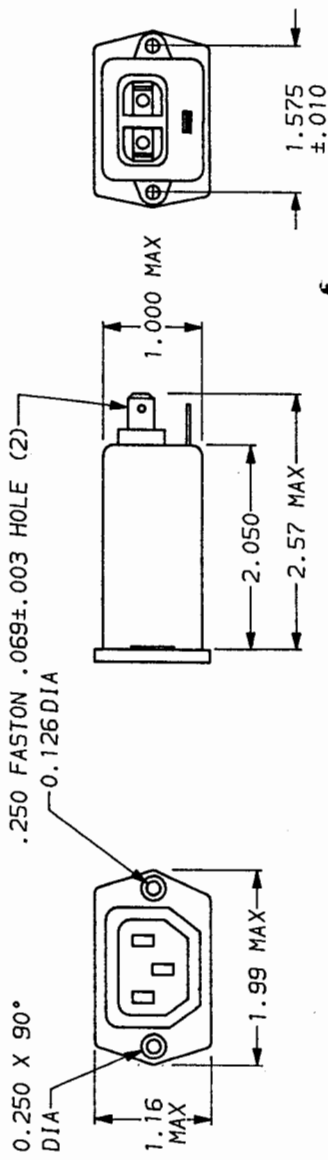
FILTER APPROVAL:
 THE BEST WAY TO SELECT AND QUALIFY A FILTER IS FOR YOUR ENGINEERING TO TEST THE UNIT IN YOUR EQUIPMENT.

TOLERANCE EXCEPT AS NOTED
 DECIMAL, .XXX .XX .X ANGLES ± 1°
 ENGLISH, ±.020 METRIC, ± 0.1
 MATERIAL: AS SUPPLIED
 FINISH: AS SUPPLIED

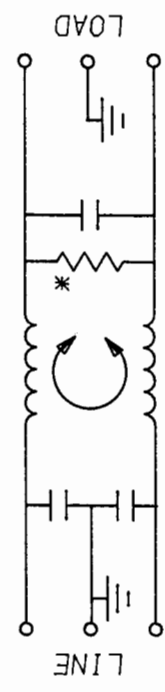


SCALE	DATE	DRG. NO.	REV.
NTS	11-5-90		6EBF1.02
DRW. BY	CFW	ORIGINATOR	CFW

ACCESSORY OUTLET FILTER



THIS FILTER LINE AND LOAD ARE REVERSED; THE SOCKET IS LOAD.



FREQUENCY	50Ω - 50n (MINIMUM) INSERTION LOSS										
MHz	.01	.05	.1	.15	.5	1	3	5	10	30	
COMMON	—	—	1	4	10	22	28	37	42	47	
DIFF. dB	—	—	—	1	2	10	14	20	33	42	40

This document is proprietary to CORCOM INC. and is not to be reproduced nor used for manufacturing purposes except on CORCOM's order or prior written consent.