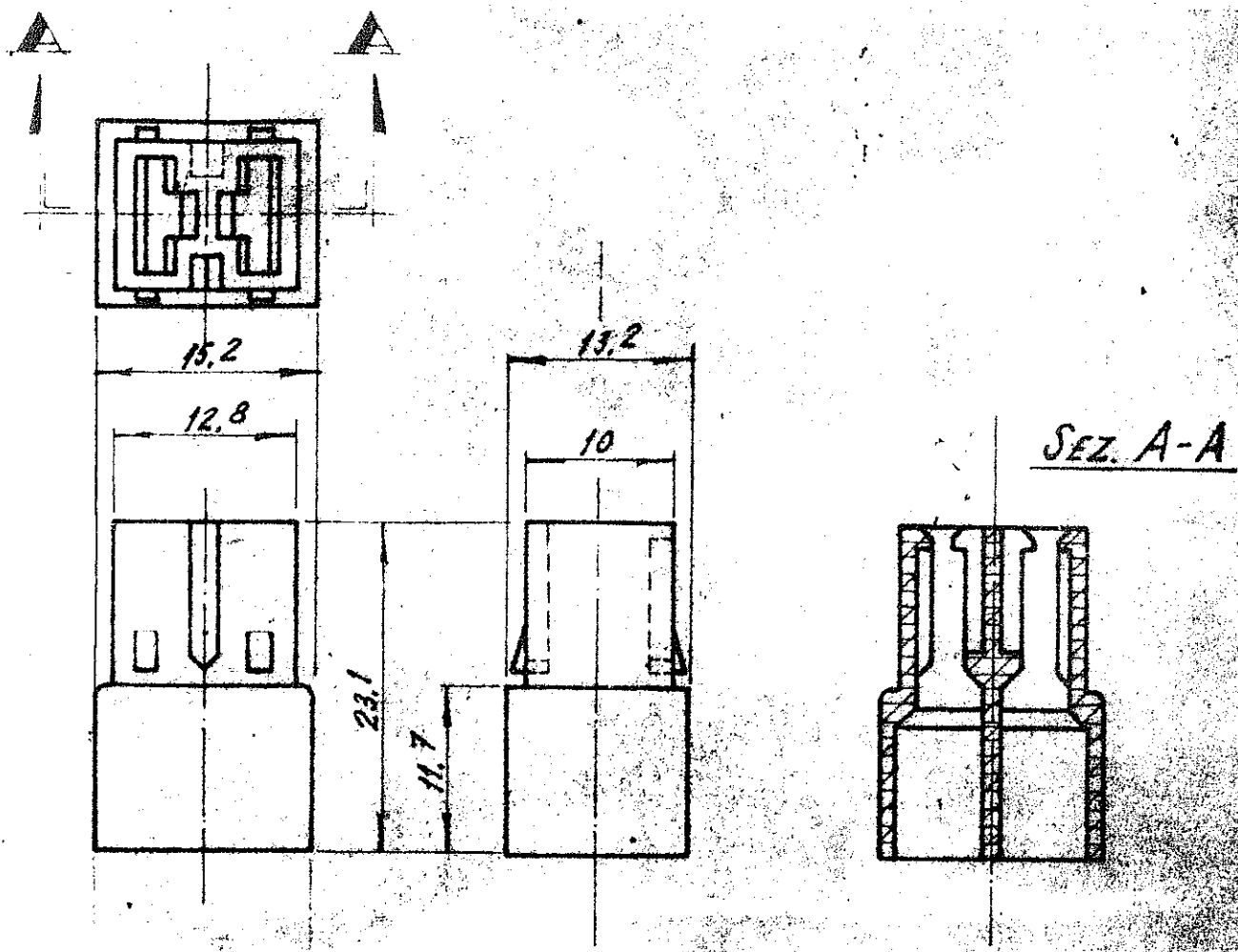
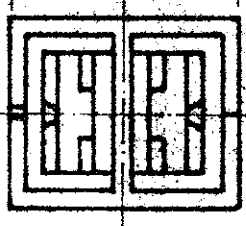


NUMBER
C-881600



- 1 ESTABILIZADO AO CALOR
HEAT STABILIZED
- 2 OBSOLETE PARTS: OBSOLETE CIS STREAMLINING
PER D.RENAUD/D.SINISI



2	A	BLACK	PA 6.6	1	- 4
	2	OBSOLETE	BLACK	1	- 3
			RED		- 2
			NATURAL	PA 6.6	881600-1
			COLOR	MATERIAL	PART NUMBER

DIMENSIONS IN INCHES DO NOT SCALE PRINT

A1	REVISED PER ECO-10-000445	KK	AEG	12JAN10
A	REVISED LE.D.0449/04	H.C.	H.C.	27DEC04
O	ERA P90-29433	NO	JRG	07-1-91
TR	REVISION RECORD	DR	GHK	DATE
DR	ML / Rudy Leaws	DE	09 JAN 91	
APP	JR / J. J. J.	APP	09 JAN 91	

© 1974 BY AMP INCORPORATED ALL RIGHTS RESERVED AMP PRODUCTS COVERED BY PATENTS AND OR PATENTS PENDING.

MATERIAL AND FINISH

SEE TABLE

WIRE RANGE INSULATION TYPE

TOLERANCE EXCEPT AS NOTED ± 0.4

SCALE 2:1

LOC A NO C-881600

REV A1

CUSTOMER COPY
REFERENCE ONLY

AMP do BRASIL LTDA
São Paulo, Brasil

AMP

CLASS

2 WAY FASTIN-FASTON REC HOUSINGS - (.250 WRS)

PRINT DATE