

Power Supplies

CXA Series CXA-K0505-VJL

DC to AC Inverters

Connector type, Dimming, 2W, For 1 Bulb

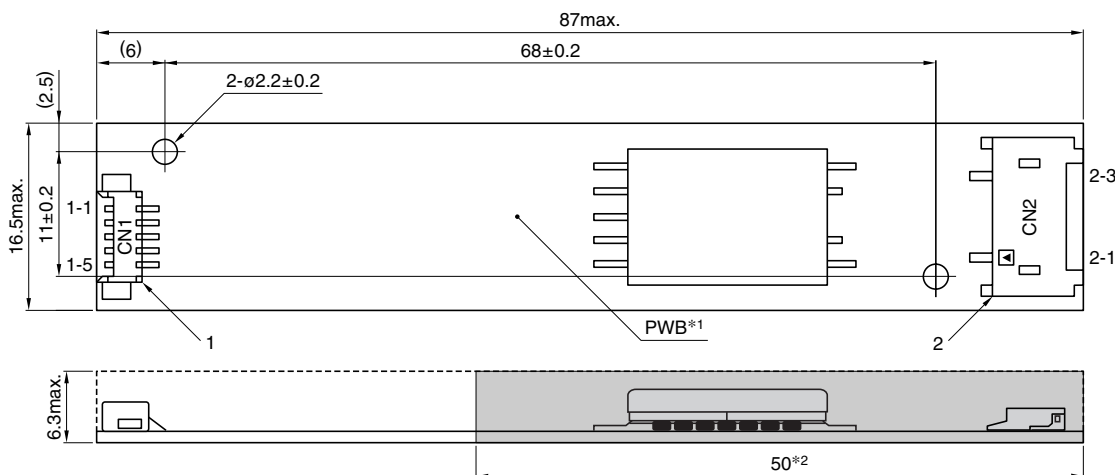
FEATURES

- The CXA-K0505-VJL is an inverter for cold cathode fluorescent lamps and features a built-in dimmer.
- Because they employ advanced output current control, fluctuations in input voltage, load, and distributed capacitance have virtually no effect on brightness.
- Output open and short circuit conditions result in no damage, heat generation, or other difficulties.
- The bottom of the board has a flat structure that facilitates insulation.
- These parts are ultra-thin with a maximum thickness of only 6.3mm.
- Safe design that includes a built-in overcurrent protection element.


TEMPERATURE AND HUMIDITY RANGES

Temperature range (°C)	Operating	0 to +60
	Storage	-30 to +85
Humidity range(%)RH	95max. [Maximum wet-bulb temperature 38°C]	

SHAPES AND DIMENSIONS



*1 Substrate (PWB: Printed wiring board): Flame retardant material 94V-0 (FR-4 or CEM-3) $t=0.8\text{mm}$

*2 : High-voltage generator (The entire surface within a range of 50mm away from the end of the base in the output)

Weight: 9g typ.

Dimensions in mm

	Connector manufacturer's company and type	Symbol
1 Input connector	Morex Japan Co., Ltd. 53261-0590	CN1
2 Output connector	Japan Solderless Terminal Co., Ltd. SM02(8.0)B-BHS-1	CN2

TERMINAL NUMBERS AND FUNCTIONS

CN1

Terminal No.	Functions	Symbol
CN1-1	Input voltage Edc: 5 to 12V 5V[nom.]	V _{in}
CN1-2	0V	GND
CN1-3	Remote voltage Edc 0V: off/5 to 12V:on	V _{rmt}
CN1-4	Brightness dimmer voltage* Edc: 0 to 3V(Maximum brightness on 0V)	V _{br}
CN1-5	Used in the internal circuits, do not connect.	N.C.

* Brightness can be controlled by adjusting V_{br} within a range of 0 to 3V.

CN2

Terminal No.	Functions	Symbol
CN2-1	Output[High voltage] I _{rms} 2 to 5mA	V _{HIGH}
CN2-2	—	N.C.
CN2-3	Output[Low voltage] (2V)	V _{LOW}

• All specifications are subject to change without notice.

Power Supplies

CXA Series CXA-K0505-VJL

DC to AC Inverters

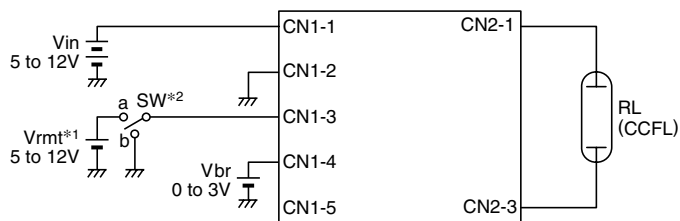
Connector type, Dimming, 2W, For 1 Bulb

ELECTRICAL CHARACTERISTICS

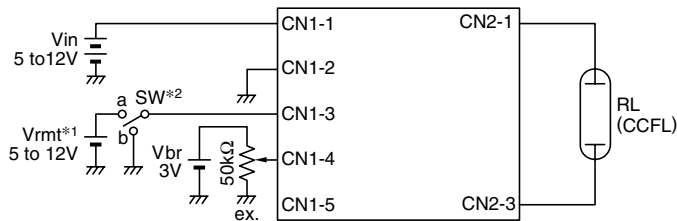
Items	Unit	Symbol	Specifications			Conditions				Brightness
			min.	typ.	max.	Vin(V)	Vbr(V)	Ta(°C)	RL(kΩ)	
Output current I _{rms}	mA	I _{out}	4.1	5	5.9	5 to 12	0	0 to +50	60 to 80	Maximum
			4.5	5	5.5	5	0	23±5	70	Maximum
			1.5	2	2.5	5	3	23±5	140	Minimum
Input current I _{dc}	A	I _{in}	—	0.5	0.66	5 to 12	0	0 to +50	60 to 80	
Oscillation frequency	kHz	F _L	35	40	45	5 to 12	0	0 to +50	60 to 80	
Open circuit output voltage E _{rms}	V	V _{open}	900	1100	—	5 to 12	0	0 to +50	∞	

TYPICAL CONNECTIONS

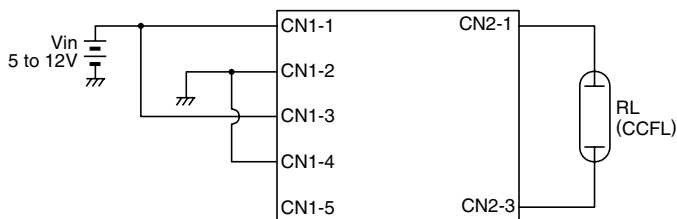
EXAMPLE OF VOLTAGE DIMMER CONTROL



EXAMPLE OF POTENTIOMETER DIMMER CONTROL



NO DIMMER CONTROL



*1 V_{rmt} (remote voltage) shall be ON after V_{in} was ON.

*2 SW a:on, b:off

BRIGHTNESS DIMMER VOLTAGE-OUTPUT CURRENT CHARACTERISTICS

