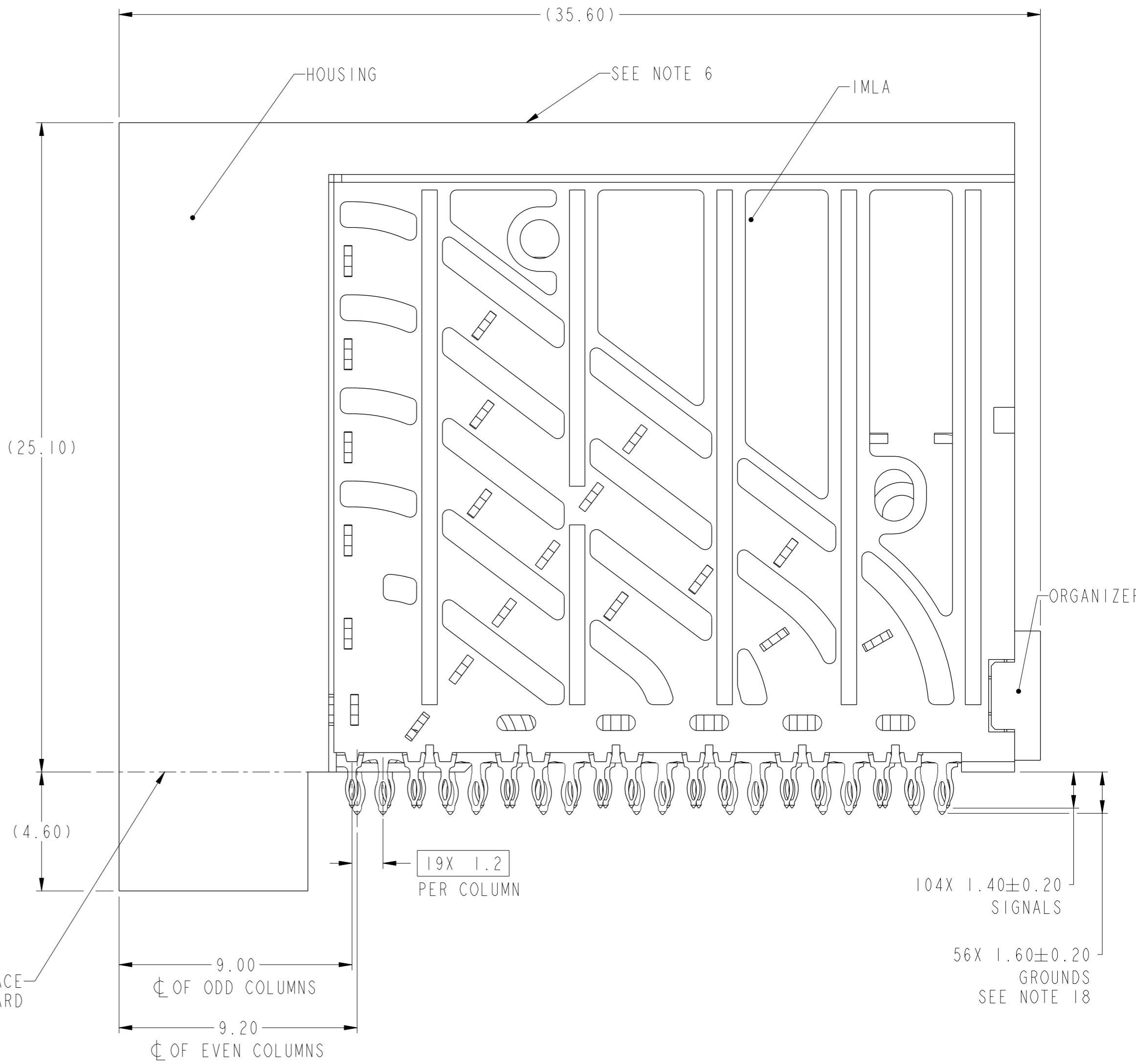
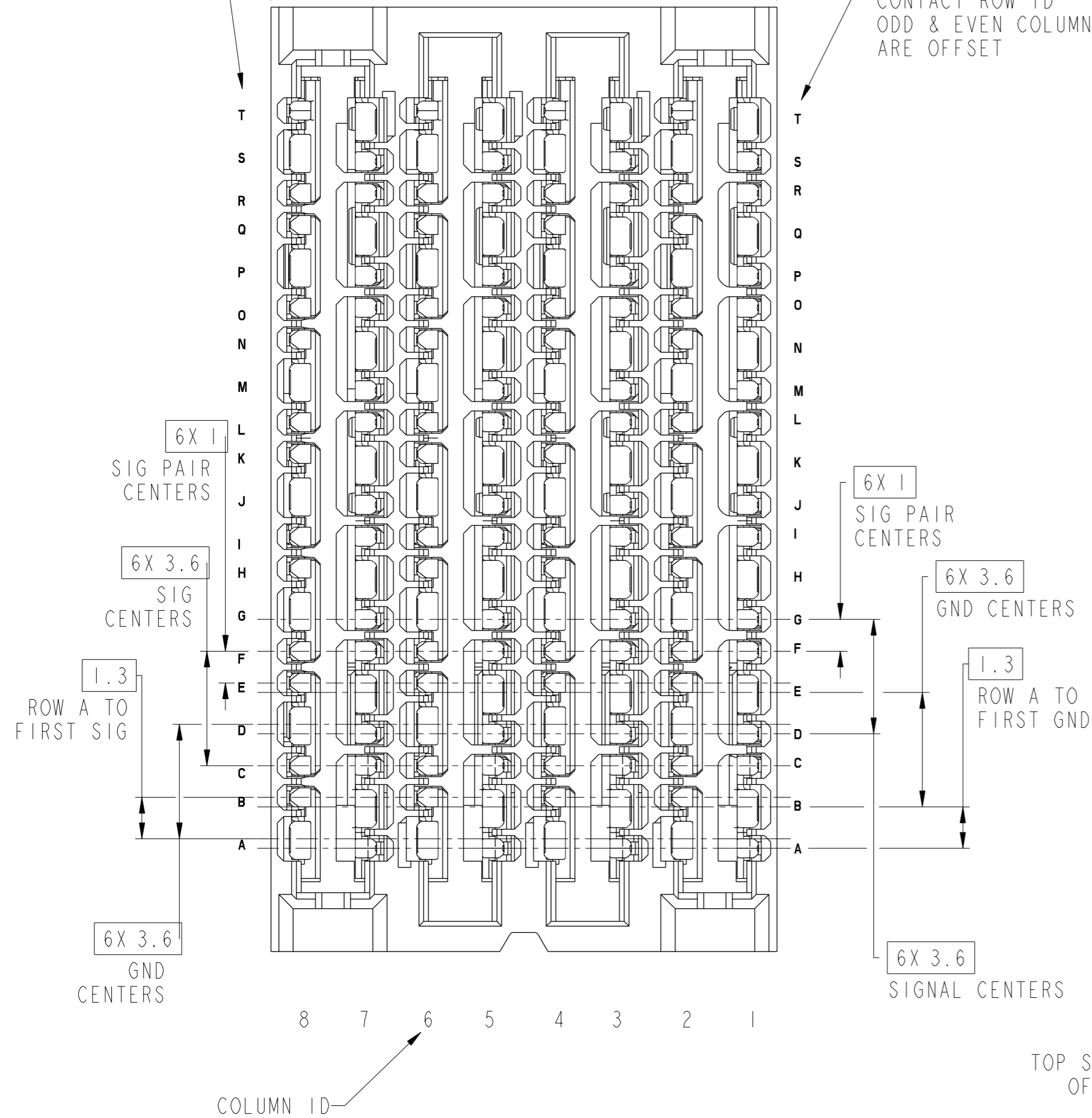


PRODUCT NUMBER
SEE TABLE

EVEN COLUMN
CONTACT ROW ID

ODD COLUMN
CONTACT ROW ID
ODD & EVEN COLUMNS
ARE OFFSET



10124556-101LF
STANDARD MATE RECEPTACLE

spec ref	SEE NOTES	dr	Mark R Gray	20130305	projection	MM	size	A2	scale	7:1										
tolerance std	TOLERANCES UNLESS OTHERWISE SPECIFIED	eng	Terry Luo	2017/01/19			ecn no	-	rel level	Released										
ASME Y14.5M		chr	Heaven Cen	2017/01/19																
		appr	Pei-Ming Zheng	2017/01/19																
surface	<table border="1"> <tr> <td>linear</td> <td>0.X</td> <td>±.3</td> </tr> <tr> <td></td> <td>0.XX</td> <td>±.10</td> </tr> <tr> <td></td> <td>0.XXX</td> <td>±.050</td> </tr> <tr> <td>angular</td> <td>0°</td> <td>±°</td> </tr> </table>	linear	0.X	±.3		0.XX	±.10		0.XXX	±.050	angular	0°	±°			Amphenol FCI title ExaMAX R.A. RECEPTACLE ASS'Y, 6 PR, 160 POS, 8 IMLA		product family ExaMAX rel level Released	cat. no. SEE TABLE Product - Customer Drw	sheet 1 of 10
linear	0.X	±.3																		
	0.XX	±.10																		
	0.XXX	±.050																		
angular	0°	±°																		

PDS: Rev :A

STATUS:Released

Printed: Feb 21, 2017

Amphenol
FCI

© 2016 APCI

1 2 3 4 5 6 7 8

A

B

C

D

E

F

A

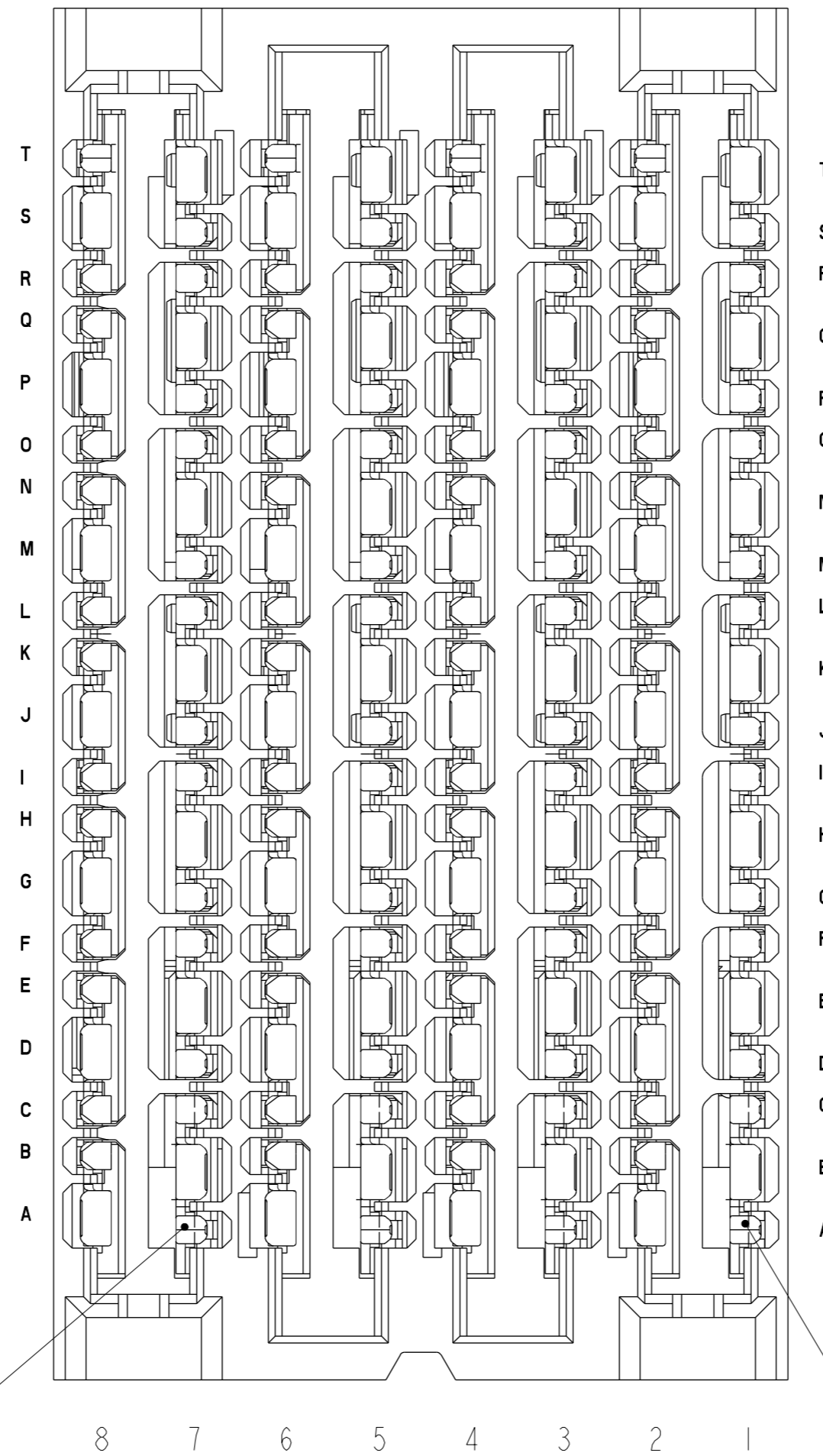
B

C

D

E

F



ADVANCED MATE POSITION A7
SEE NOTE 13

ADVANCED MATE POSITION A1
SEE NOTE 13

10124556-201LF
ADVANCED MATE RECEPTACLE
 ADVANCED MATE POSITIONS ARE POSITIONS A1 AND A7 ONLY
 FOR ALL DIMENSIONS SEE 10124556-101LF ON SHEET 1

Amphenol FCI

© 2016 AFci

spec ref	SEE NOTES	dr	Mark R Gray	20130305	projection	MM	size	A2	scale	3:1										
tolerance std	ASME Y14.5M	eng	Terry Luo	2017/01/19			ecn no	-												
TOLERANCES UNLESS OTHERWISE SPECIFIED		chr	Heaven Cen	2017/01/19			rel level	Released												
surface	<table border="1"> <tr> <td rowspan="3">linear</td> <td>0.X</td> <td>±.3</td> </tr> <tr> <td>0.XX</td> <td>±.10</td> </tr> <tr> <td>0.XXX</td> <td>±.050</td> </tr> <tr> <td>angular</td> <td>0°</td> <td>±°</td> </tr> </table>	linear	0.X	±.3	0.XX	±.10	0.XXX	±.050	angular	0°	±°	appr	Pei-Ming Zheng	2017/01/19	product family	ExaMAX	rel level	Released		
linear	0.X		±.3																	
	0.XX		±.10																	
	0.XXX	±.050																		
angular	0°	±°																		
		Amphenol FCI	title ExaMAX R.A. RECEPTACLE ASS'Y, 6 PR, 160 POS, 8 IMLA		cat. no.	SEE TABLE	Product - Customer Drw	sheet 2 of 10	rev	A										

PDS: Rev :A

STATUS:Released

Printed: Feb 21, 2017

A

B

C

D

E

F

A

B

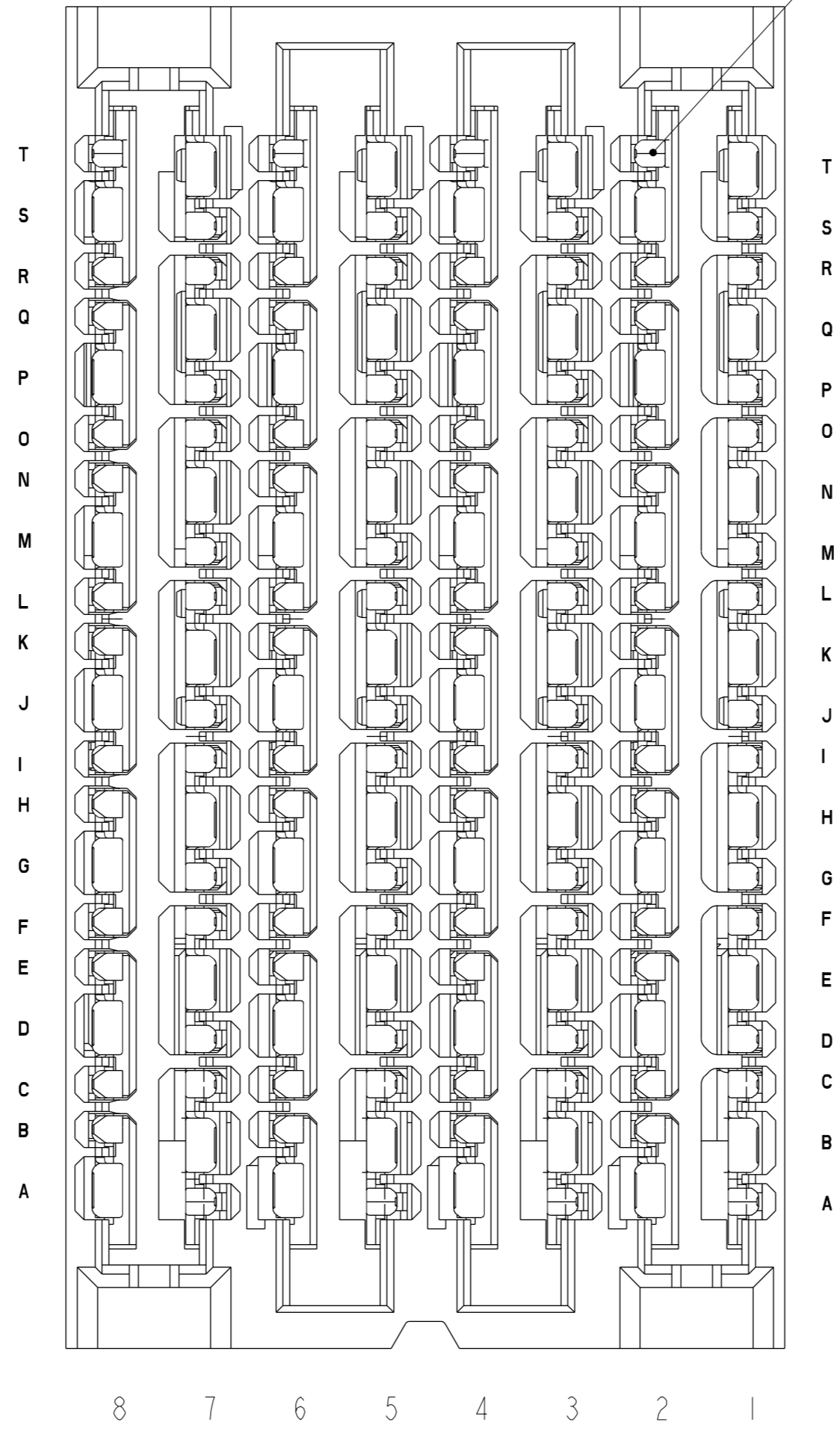
C

D

E

F

SHORT DETECT
POSITION T2
SEE NOTE 14



10124556-301LF
SHORT DETECT RECEPTACLE
SHORT DETECT POSITION IS POSITION T2
FOR ALL DIMENSIONS SEE 10124556-101LF ON SHEET 1

**Amphenol
FCi**

© 2016 AFci

spec ref	SEE NOTES	dr	Mark R Gray	20130305	projection	MM	size	A2	scale	3:1								
tolerance std	TOLERANCES UNLESS OTHERWISE SPECIFIED	eng	Terry Luo	2017/01/19			ecn no	-	rel level	Released								
ASME Y14.5M		chr	Heaven Cen	2017/01/19														
surface	<table border="1"> <tr> <td rowspan="3">linear</td> <td>0.X</td> <td>±.3</td> </tr> <tr> <td>0.XX</td> <td>±.10</td> </tr> <tr> <td>0.XXX</td> <td>±.050</td> </tr> <tr> <td>angular</td> <td>0°</td> <td>±°</td> </tr> </table>	linear	0.X	±.3	0.XX	±.10	0.XXX	±.050	angular	0°	±°	apppr	Pei-Ming Zheng	2017/01/19	product family	ExaMAX	rel level	Released
linear	0.X		±.3															
	0.XX		±.10															
	0.XXX	±.050																
angular	0°	±°																
				title ExaMAX R.A. RECEPTACLE ASS'Y, 6 PR, 160 POS, 8 IMLA		dwg no 10124556		rev A										
		cat. no.		SEE TABLE		Product - Customer Drw		sheet 3 of 10										

1 2 3 4 5 6 7 8

A

B

C

D

E

F

A

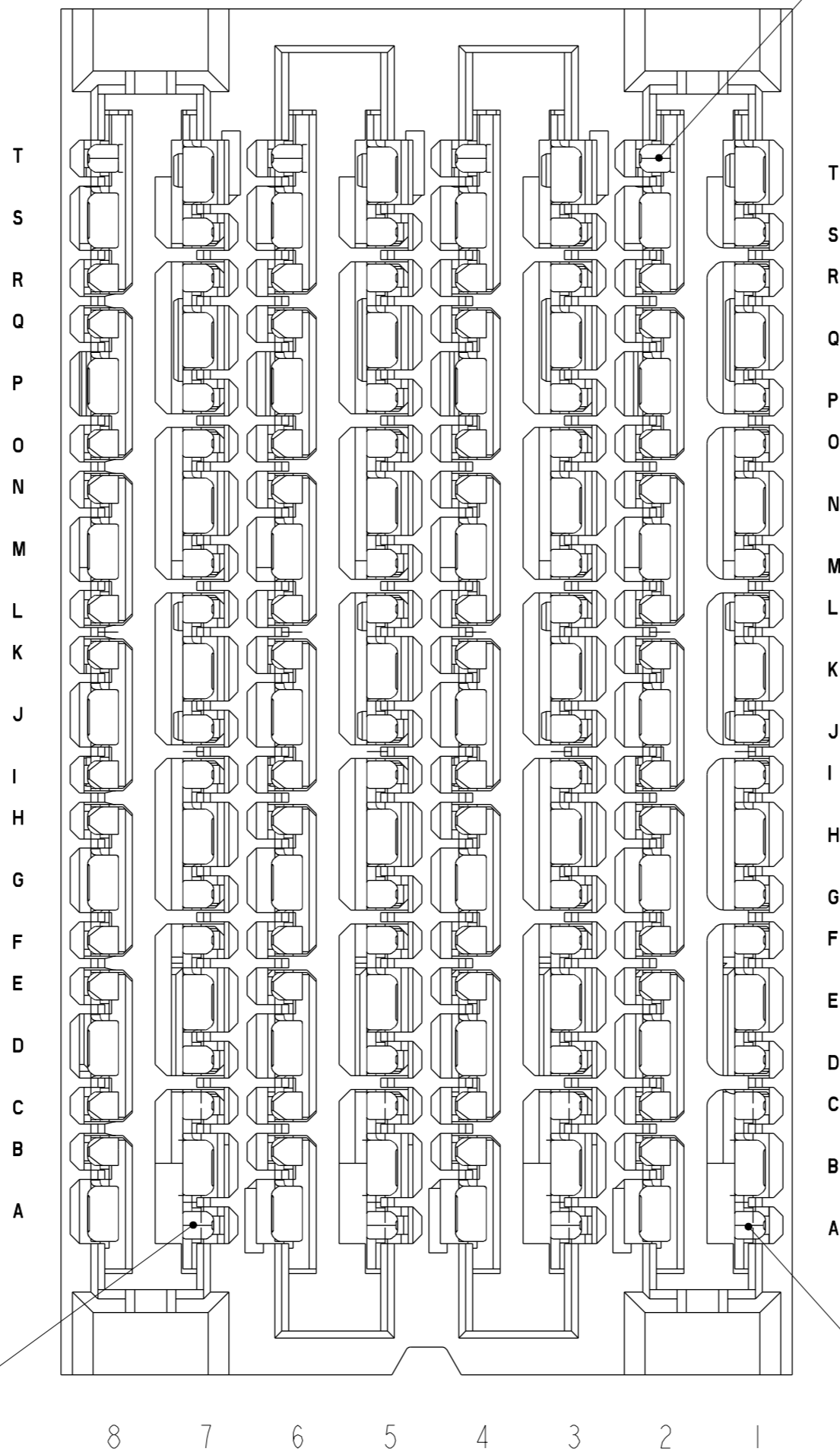
B

C

D

E

F



SHORT DETECT
POSITION T2
SEE NOTE 15

ADVANCED MATE
POSITION A7
SEE NOTE 15

ADVANCED MATE
POSITION A1
SEE NOTE 15

10124556-401LF
ADVANCED MATE/SHORT DETECT RECEPTACLE
ADVANCED MATE POSITIONS ARE POSITIONS A1 AND A7 ONLY
SHORT DETECT POSITION IS POSITION T2
FOR ALL DIMENSIONS SEE 10124556-101LF ON SHEET 1

Amphenol
FCi

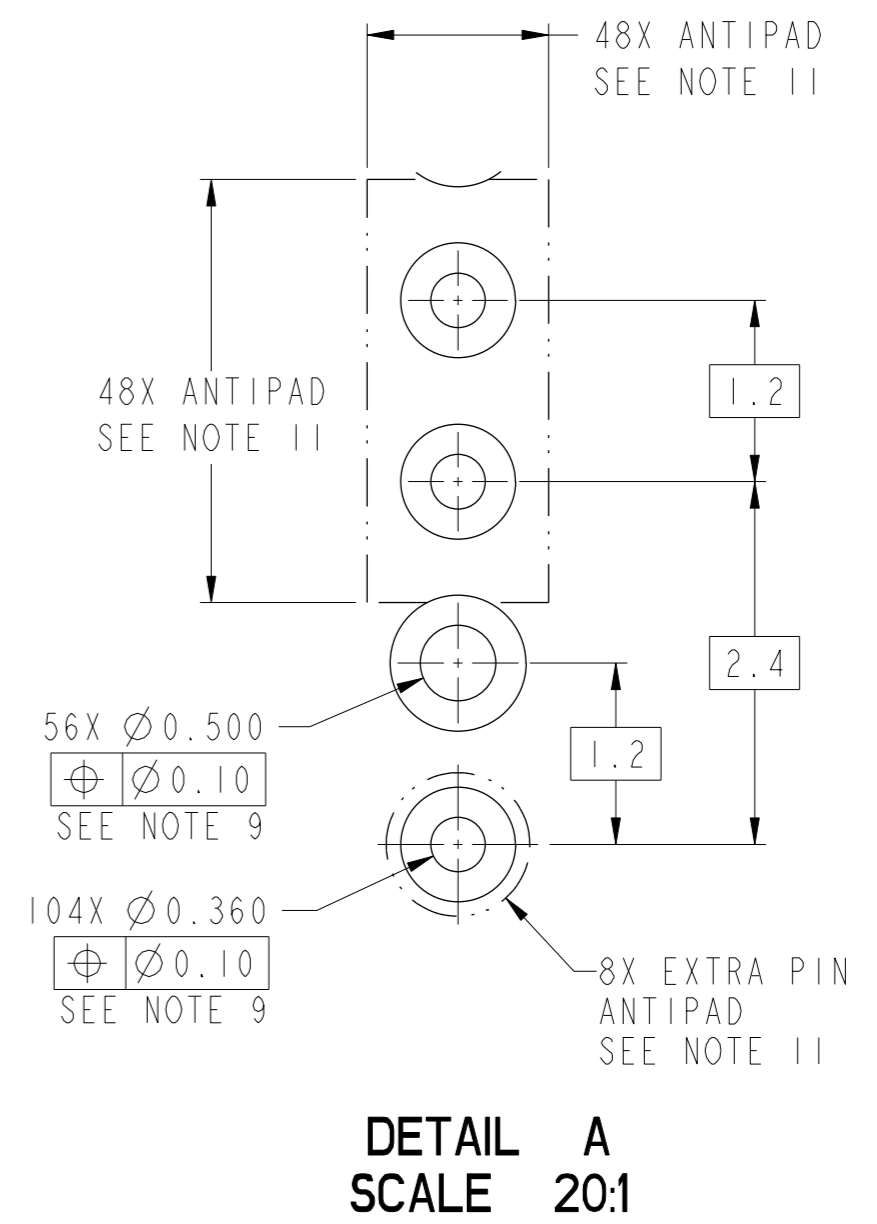
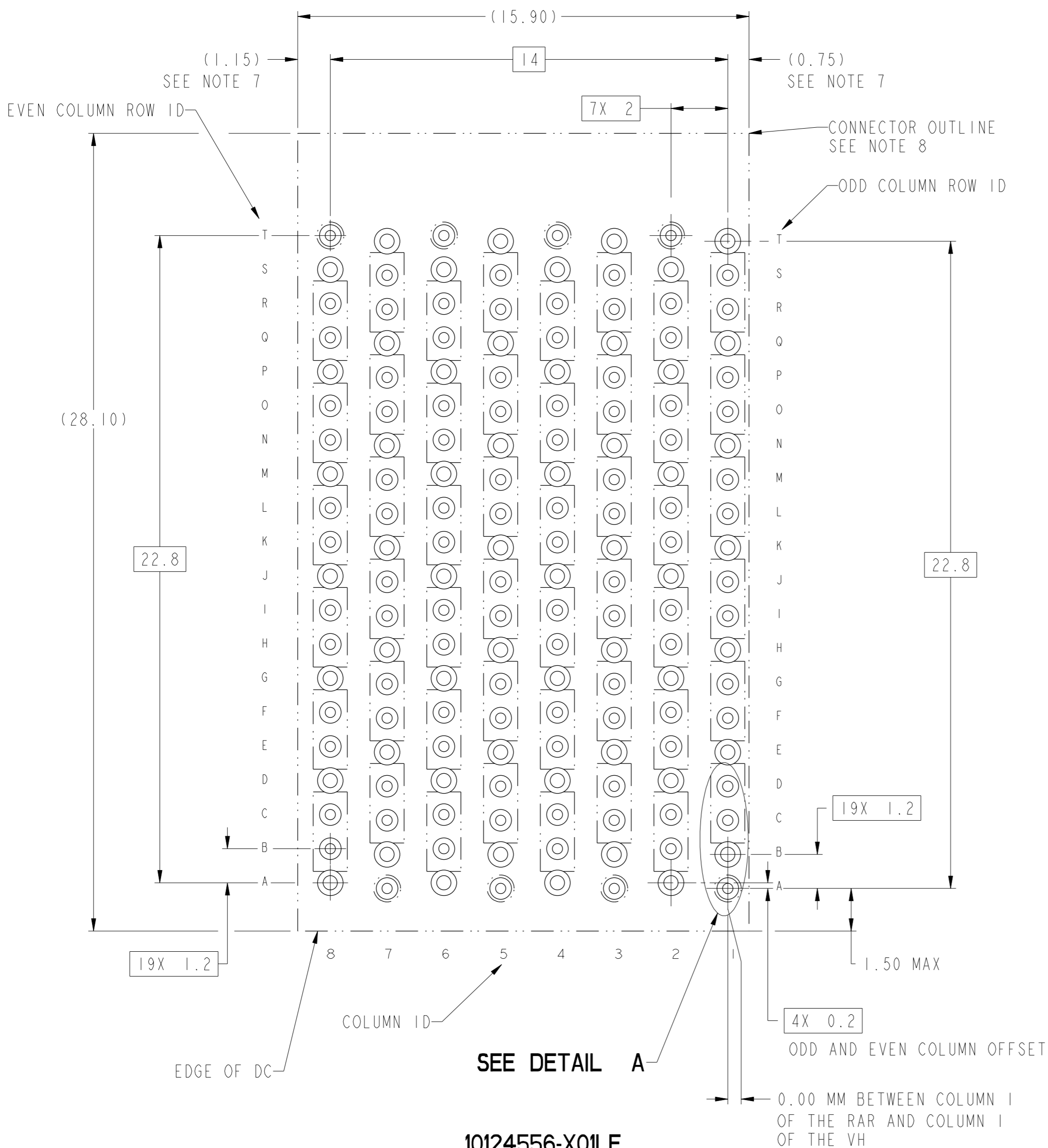
© 2016 AFci

spec ref	SEE NOTES	dr	Mark R Gray	20130305	projection	MM	size	A2	scale	3:1									
tolerance std	TOLERANCES UNLESS OTHERWISE SPECIFIED	eng	Terry Luo	2017/01/19			ecn no	-											
ASME Y14.5M		chr	Heaven Cen	2017/01/19			rel level	Released											
		appr	Pei-Ming Zheng	2017/01/19			product family	ExaMAX											
surface	<table border="1"> <tr> <td rowspan="3">linear</td> <td>0.X</td> <td>±.3</td> </tr> <tr> <td>0.XX</td> <td>±.10</td> </tr> <tr> <td>0.XXX</td> <td>±.050</td> </tr> <tr> <td>angular</td> <td>0°</td> <td>±°</td> </tr> </table>	linear	0.X	±.3	0.XX	±.10	0.XXX	±.050	angular	0°	±°		ExaMAX R.A. RECEPTACLE ASS'Y, 6 PR, 160 POS, 8 IMLA		title cat. no.	dwg no 10124556	rev A	Product - Customer Drw sheet 4 of 10	
linear	0.X		±.3																
	0.XX		±.10																
	0.XXX	±.050																	
angular	0°	±°																	

PDS: Rev :A

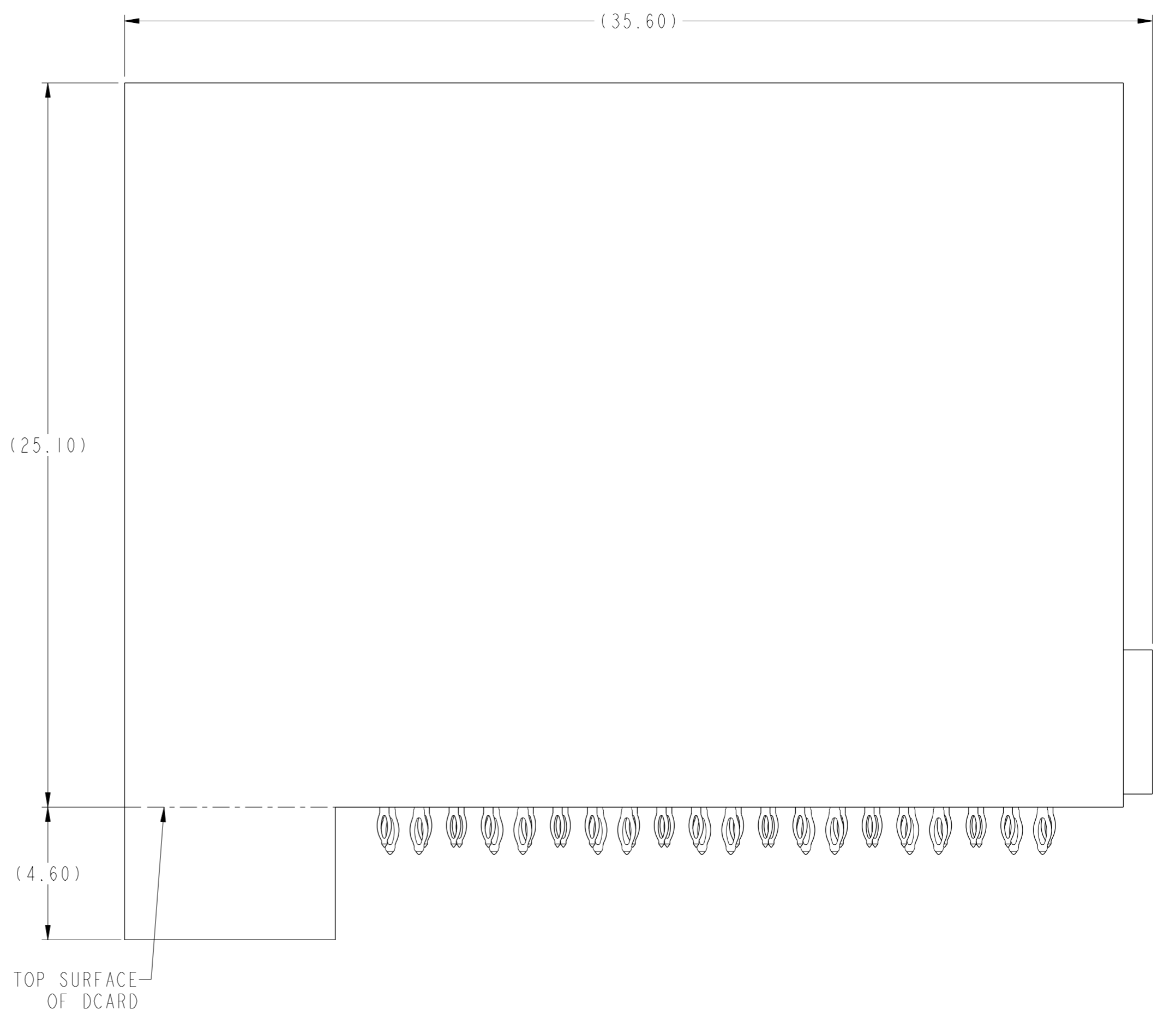
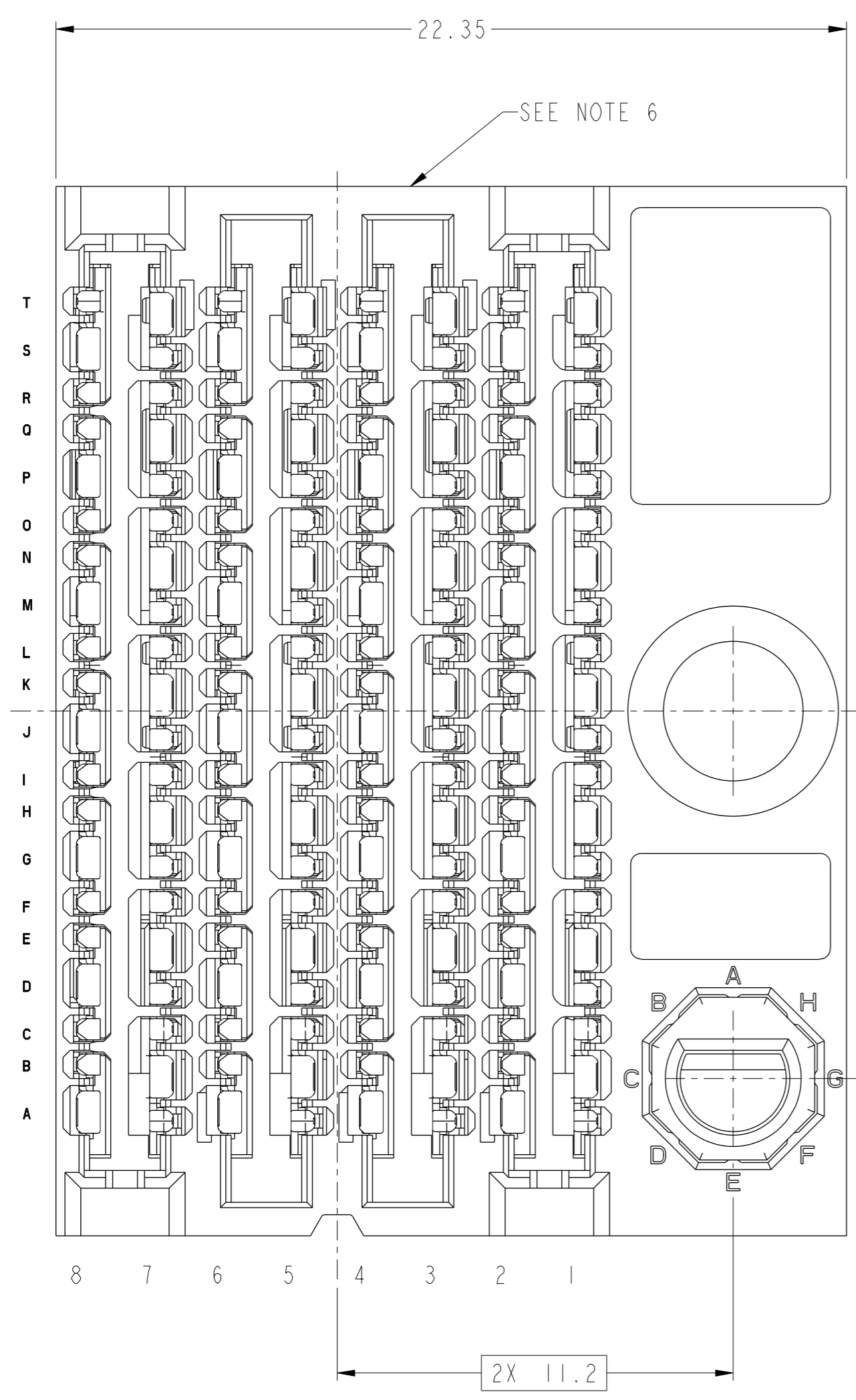
STATUS:Released

Printed: Feb 21, 2017



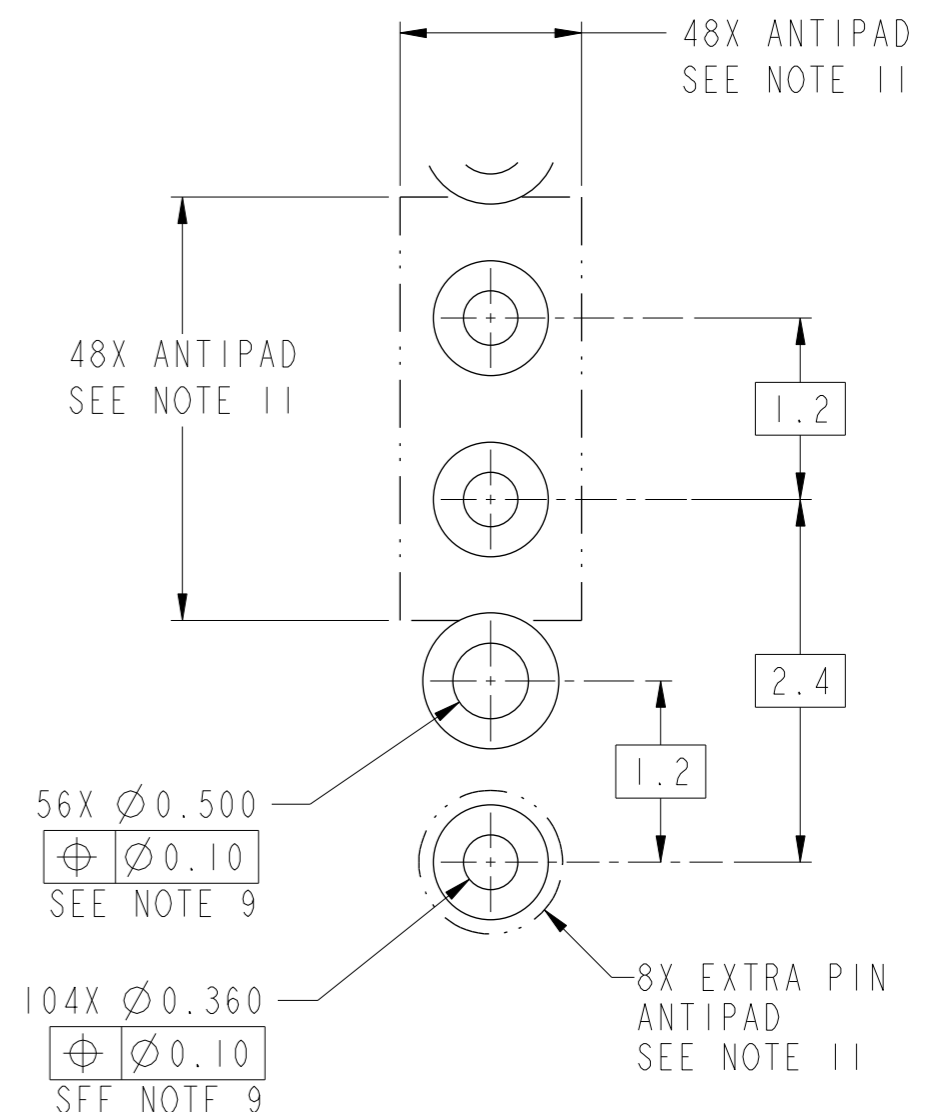
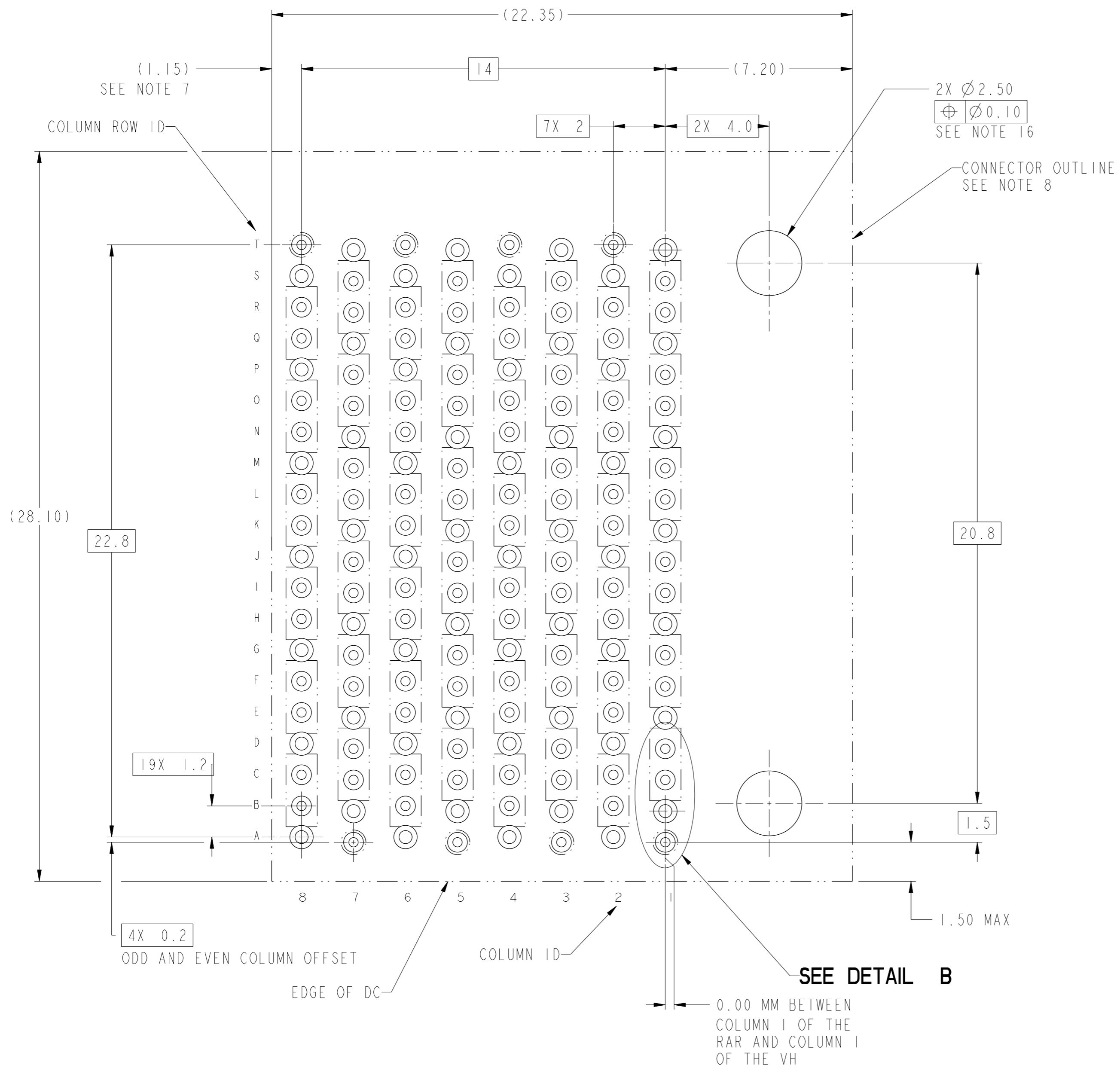
10124556-X01LF
 RECOMMENDED PCB LAYOUT
 COMPONENT SIDE
 NOTES 7, 8, 9, & 11
 SCALE 8:1

spec ref	SEE NOTES	dr	Mark R Gray	20130305	projection	MM	size	A2	scale	1:1
tolerance std	TOLERANCES UNLESS OTHERWISE SPECIFIED	eng	Terry Luo	2017/01/19			ecn no	-	rel level	Released
ASME Y14.5M		chr	Heaven Cen	2017/01/19						
surface	linear	appr	Pei-Ming Zheng	2017/01/19	product family	ExaMAX	rel level	Released	cat. no.	SEE TABLE
	angular				title	ExaMAX R.A. RECEPTACLE	rel level	Released	Product - Customer Drw	sheet 5 of 10
					ass'y	ASS'Y, 6 PR, 160 POS, 8 IMLA	rel level	Released	Product - Customer Drw	sheet 5 of 10



10124556-X1ALF THRU -X1JLF
RIGHT GUIDANCE (SEE NOTE 17)
FOR ALL DIMENSIONS SEE 10124556-101LF ON SHEET 1
SCALE 7:1

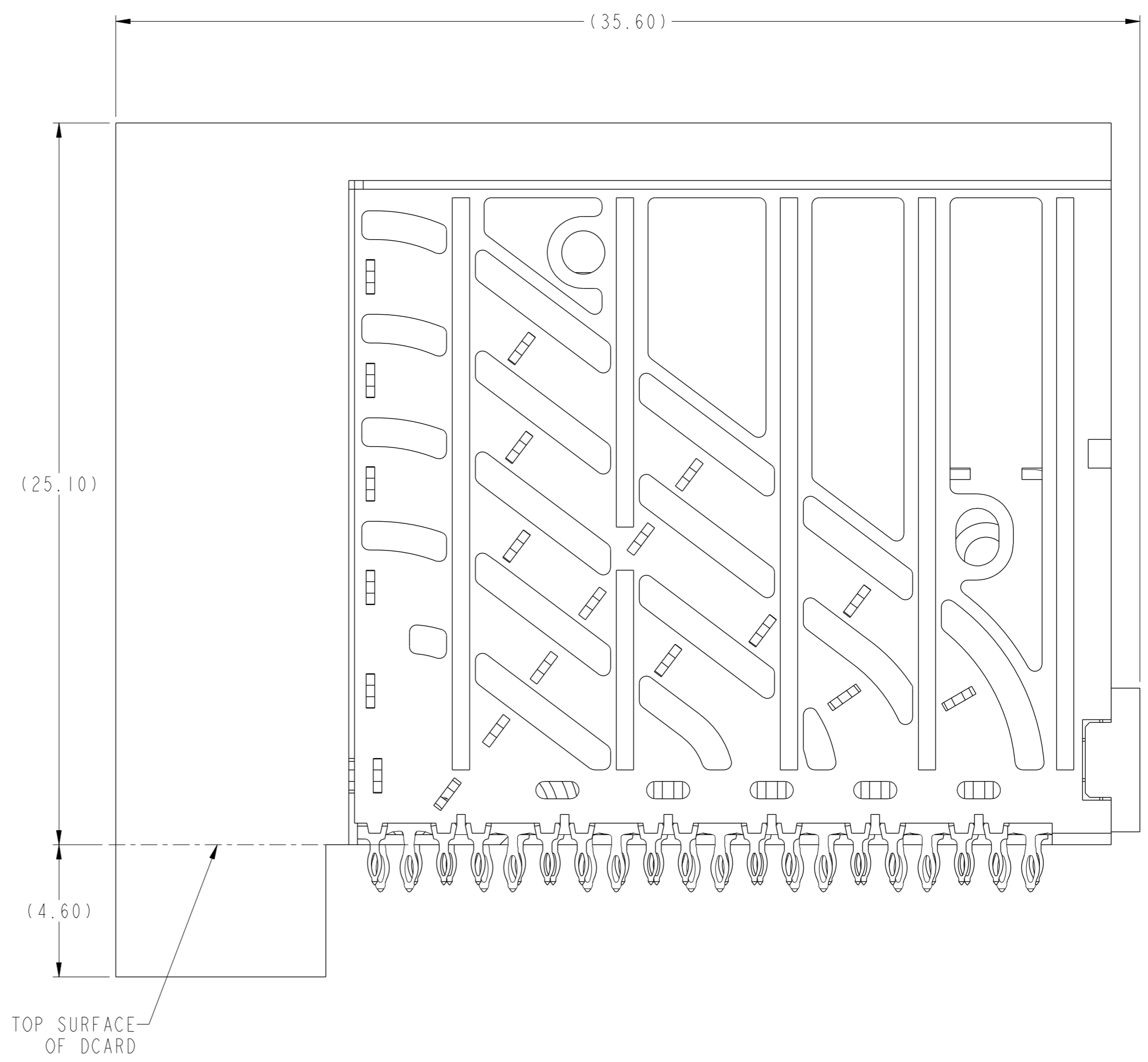
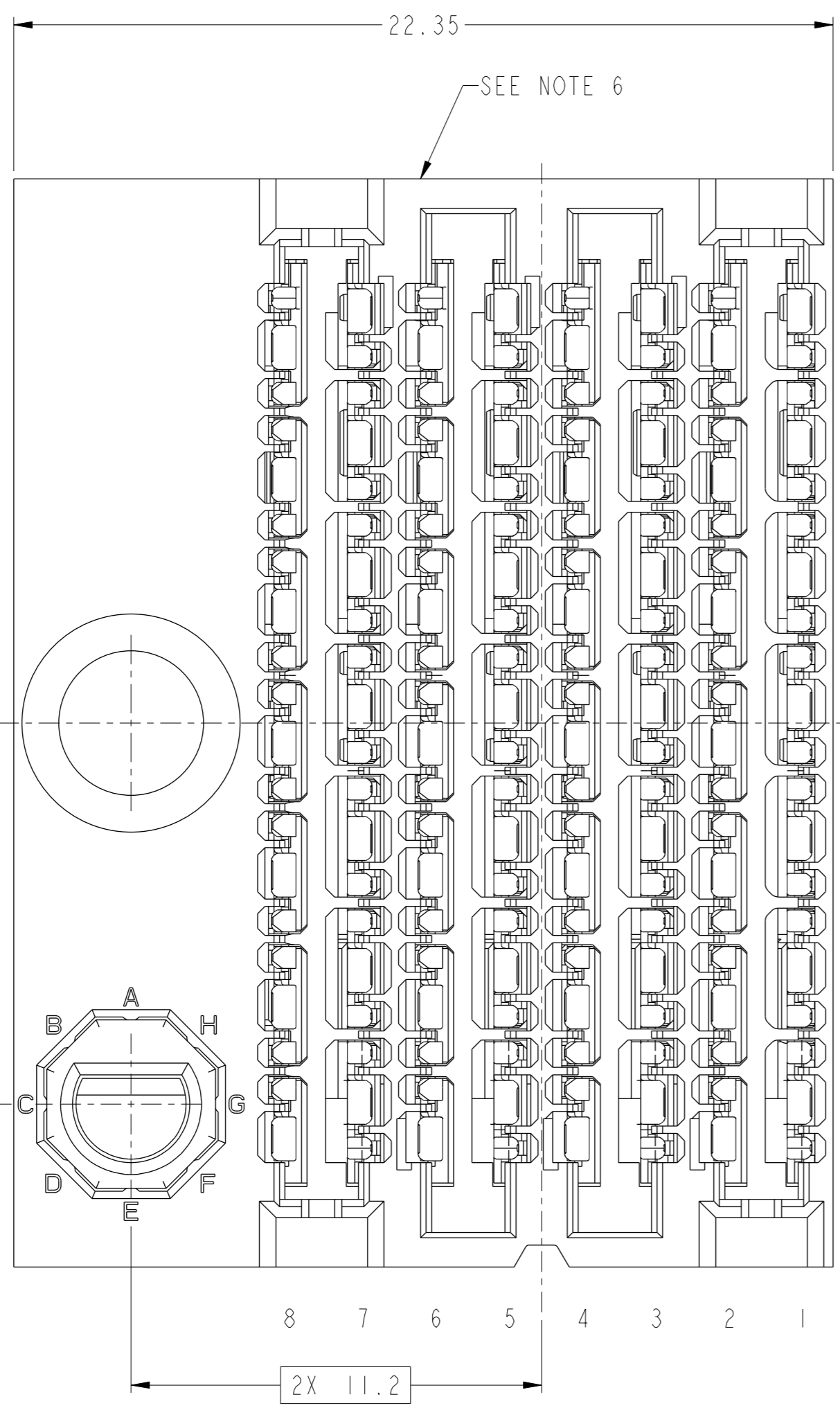
spec ref	SEE NOTES	dr	Mark R Gray	20130305	projection	MM	size	A2	scale	8:1
tolerance std	TOLERANCES UNLESS OTHERWISE SPECIFIED	eng	Terry Luo	2017/01/19			ecn no	-	rel level	Released
ASME Y14.5M		chr	Heaven Cen	2017/01/19						
surface	linear	appr	Pei-Ming Zheng	2017/01/19	product family	ExaMAX	rel level	Released	rev	A
	angular				cat. no.	SEE TABLE	Product - Customer Drw	sheet 6 of 10		



DETAIL B
SCALE 20:1

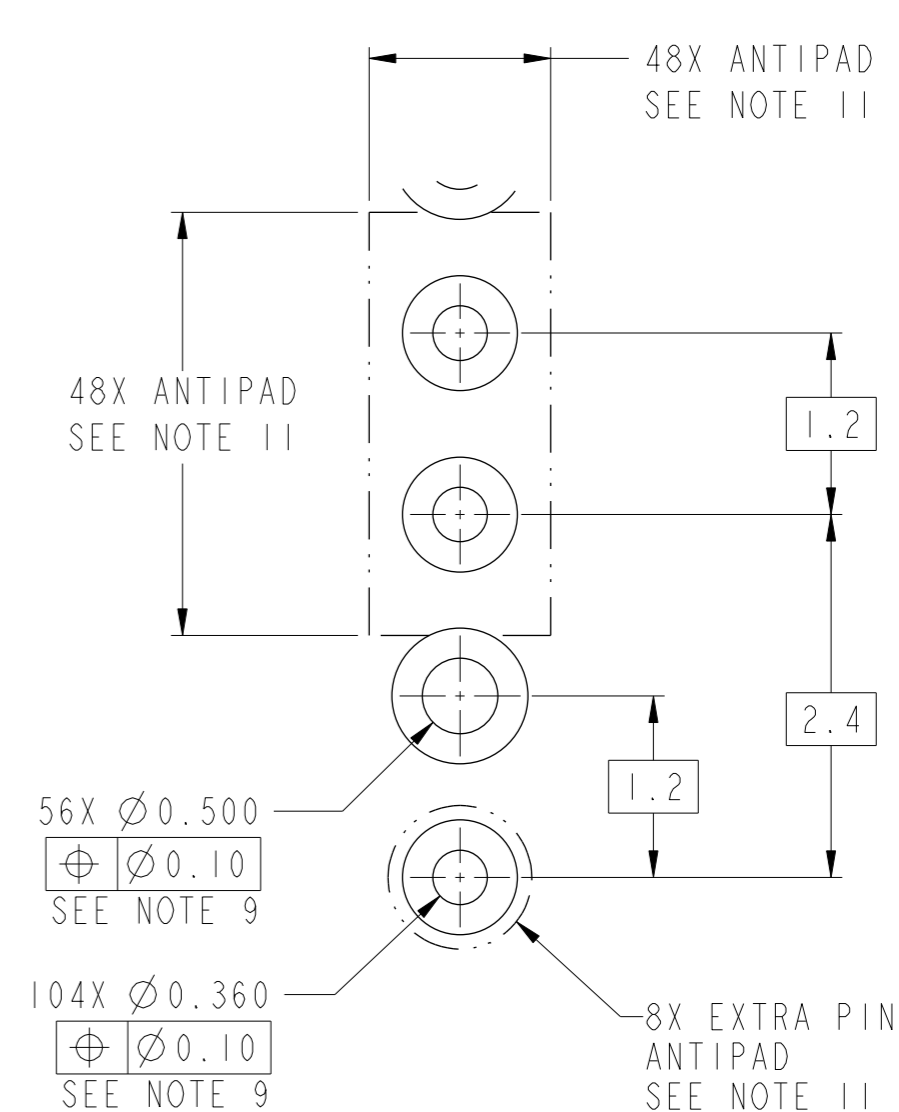
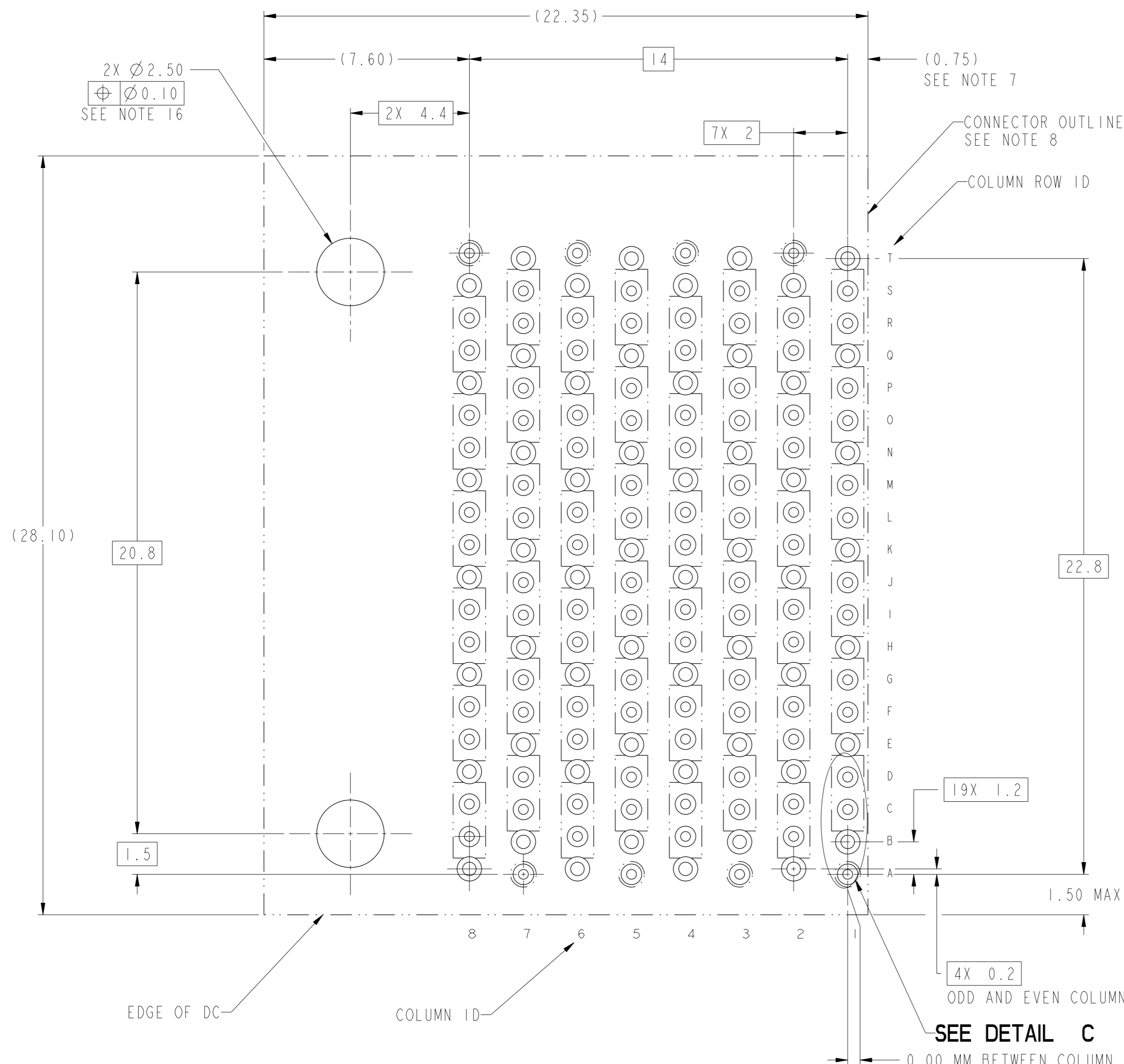
10124556-X1ALF THRU -X1JLF
RECOMMENDED PCB LAYOUT
COMPONENT SIDE
NOTES 7, 8, 9, 11 & 16
SCALE 8:1

spec ref	SEE NOTES	dr	Mark R Gray	20130305	projection	MM	size	A2	scale	8:1
tolerance std	TOLERANCES UNLESS OTHERWISE SPECIFIED	eng	Terry Luo	2017/01/19			ecn no	-	rel level	Released
ASME Y14.5M		chr	Heaven Cen	2017/01/19						
surface	linear	appr	Pei-Ming Zheng	2017/01/19	product family	ExaMAX	rel level	Released	rev	A
	angular				title	ExaMAX R.A. RECEPTACLE		cat. no.	10124556	sheet 7 of 10



10124556-X2ALF THRU -X2JLF
LEFT GUIDANCE (SEE NOTE 17)
FOR ALL DIMENSIONS SEE 10124556-101LF ON SHEET 1
SCALE 7:1

spec ref	SEE NOTES	dr	Mark R Gray	20130305	projection	MM	size	A2	scale	8:1
tolerance std	TOLERANCES UNLESS OTHERWISE SPECIFIED	eng	Terry Luo	2017/01/19			ecn no	-	rel level	Released
ASME Y14.5M		chr	Heaven Cen	2017/01/19						
		appr	Pei-Ming Zheng	2017/01/19						
surface	linear	0.X	±.3		product family		ExaMAX	title ExaMAX R.A. RECEPTACLE ASS'Y, 6 PR, 160 POS, 8 IMLA cat. no. SEE TABLE	Product - Customer Draw	sheet 8 of 10
		0.XX	±.10		rel level Released					
		0.XXX	±.050							
	angular	0°	±°	title ExaMAX R.A. RECEPTACLE ASS'Y, 6 PR, 160 POS, 8 IMLA cat. no. SEE TABLE	rel level Released	product family ExaMAX	title ExaMAX R.A. RECEPTACLE ASS'Y, 6 PR, 160 POS, 8 IMLA cat. no. SEE TABLE	rel level Released	product family ExaMAX	title ExaMAX R.A. RECEPTACLE ASS'Y, 6 PR, 160 POS, 8 IMLA cat. no. SEE TABLE



10124556-X2ALF THRU -X2JLF
RECOMMENDED PCB LAYOUT
COMPONENT SIDE
NOTES 7, 8, 9, 11 & 16
SCALE 8:1

spec ref	SEE NOTES	dr	Mark R Gray	20130305	projection	MM	size	A2	scale	8:1
tolerance std	TOLERANCES UNLESS OTHERWISE SPECIFIED	eng	Terry Luo	2017/01/19			ecn no	-	rel level	Released
ASME Y14.5M		chr	Heaven Cen	2017/01/19						
surface	linear	appr	Pei-Ming Zheng	2017/01/19	product family	ExaMAX	rel level	Released	title	ExaMAX R.A. RECEPTACLE
	angular								cat. no.	SEE TABLE
	0.X	±.3							Product - Customer Drw	sheet 9 of 10
	0.XX	±.10								
	0.XXX	±.050								
	0°	±°								

10124556 - Y Y Y L F

ASSEMBLY PART NUMBER	DESCRIPTION
10124556-1YYLF	STANDARD MATE
10124556-2YYLF	ADVANCED MATE
10124556-3YYLF	SHORT DETECT
10124556-4YYLF	ADVANCED MATE & SHORT DETECT

MODULE DESCRIPTION	DESIGNATION REPRESENTED IN DASH NUMBER										BASE MODULE
	01										
WITHOUT END GUIDES MODULE (SEE SHEET 1)											
RIGHT GUIDANCE MODULE (SEE SHEET 6)	1A	1B	1C	1D	1E	1F	1G	1H	1J (NO KEY)		
LEFT GUIDANCE MODULE (SEE SHEET 8)	2A	2B	2C	2D	2E	2F	2G	2H	2J (NO KEY)		

NOTES:

- ① - CONNECTOR MATERIALS:
HOUSING: HIGH TEMP THERMOPLASTIC, BLACK, UL94-V0
IMLA PLASTIC: HIGH TEMP THERMOPLASTIC, BLACK, UL94-V0
CONTACT: COPPER ALLOY
ORGANIZER: HIGH TEMP THERMOPLASTIC, BLACK, UL94-V0
- 2 - CONTACT PLATING:
SEPARABLE INTERFACE:
PERFORMANCE-BASED PLATING, QUALIFIED TO MEET THE REQUIREMENTS OF FCI PRODUCT SPECIFICATION GS-12-1096 INCLUDING TELCORDIA GR-1217-CORE (NOVEMBER 1995) CENTRAL OFFICE TEST SEQUENCE

PRESS-FIT TAILS: TIN OVER NICKEL (LEAD FREE)
- ③ - PRODUCT SPECIFICATION: GS-12-1096
- ④ - APPLICATION SPECIFICATION GS-20-0361.
- ⑤ - PACKAGING MEETS GS-14-920 LEAD FREE LABELING SPECIFICATION.
- ⑥ - PRODUCT MARKING, (PROTOTYPE, PART NUMBER & LOT CODE), ON THIS SURFACE.
- ⑦ - THE MINIMUM VIA SPACING BETWEEN STACKED CONNECTORS IS 2.0 MM FOR THIS RAR AND THE MATING HEADER. REFER TO THE APPLICATION SPECIFICATION FOR DETAILS
- ⑧ - CONNECTOR OUTLINE MAY BE SCREEN PRINTED ONTO CUSTOMER PCB TO BE USED AS A GUIDE FOR MANUAL CONNECTOR PLACEMENT.
- ⑨ - REFER TO CUSTOMER DRAWING 10119933 FOR INFORMATION ON PCB HOLE DIAMETERS AND PLATING OPTIONS
- ⑩ - THIS PRODUCT MEETS THE EUROPEAN UNION DIRECTIVES & OTHER COUNTRY REGULATIONS AS DESCRIBED IN GS-47-0004.
- ⑪ - REFER TO APPLICATION SPECIFICATION FOR TRACE ROUTING EXAMPLES THAT INCLUDE DIMENSIONS FOR ANTIPADS, TRACE WIDTH, TRACE SPACING, ETC.
- 12 - THE HOUSING WILL WITHSTAND EXPOSURE TO 260° C PEAK TEMPERATURE FOR 10-30 SECONDS IN A CONVECTION, INFRA-RED OR VAPOR PHASE REFLOW OVEN.
- ⑬ - THE ADVANCED MATE RECEPTACLE, 10124556-2XXLF, WHEN MATED WITH AN ADVANCED MATE VERTICAL HEADER OR AN ADVANCED MATE RIGHT-ANGLE HEADER, WILL PROVIDE 2 PAIRS OF MATING CONTACTS THAT MATE 0.75MM BEFORE THE REMAINDER OF THE SIGNAL AND GROUND CONTACTS.

- ⑭ - THE SHORT DETECT RECEPTACLE, 10124556-3XXLF, WHEN MATED WITH A STANDARD MATE VERTICAL HEADER OR A STANDARD MATE RIGHT-ANGLE HEADER, WILL PROVIDE 1 PAIR OF MATING CONTACTS THAT MATE 1.00 MM AFTER THE REMAINDER OF THE SIGNAL AND GROUND CONTACTS.
- ⑮ - THE ADVANCED MATE/SHORT DETECT RECEPTACLE, 10124556-4XXLF, WHEN MATED WITH AN ADVANCED MATE VERTICAL HEADER OR AN ADVANCED MATE RIGHT-ANGLE HEADER, WILL PROVIDE 2 PAIRS OF MATING CONTACTS THAT MATE 0.75 MM BEFORE THE REMAINDER OF THE SIGNAL AND GROUND CONTACTS AND 1 PAIR OF MATING CONTACTS THAT MATE 1.00 MM AFTER THE REMAINDER OF THE SIGNAL AND GROUND CONTACTS.
- ⑯ - FOR CONNECTORS WITH EITHER A RIGHT OR LEFT GUIDE MODULE, TWO PHILLIPS PAN HEAD M2 HOLD DOWN SCREW MUST BE USED TO SECURE THE CONNECTOR TO THE PCB. THE SCREW LENGTH SHALL BE 2.0-6.0mm PLUS THE THICKNESS OF THE BOARD. SCREWS ARE NOT PROVIDED WITH CONNECTOR.
- ⑰ - LEFT / RIGHT INTEGRATED GUIDE ORIENTATION IS DETERMINED BY THE LOCATION OF THE GUIDE FEATURES WHEN LOOKING AT THE MATING FACE OF THE RIGHT ANGLE RECEPTACLE. THE LEFT / RIGHT DESIGNATION OF THE MATING HEADER IS DEFINED BY THE RIGHT ANGLE RECEPTACLE THAT IT MATES WITH (i. e. A RIGHT GUIDE VERTICAL HEADER MATES WITH A RIGHT ANGLE RECEPTACLE.)
- ⑱ - ALL GROUND CONTACTS ARE COMMONED WITHIN A COLUMN.

spec ref	SEE NOTES	dr	Mark R Gray	20130305	projection	MM	size	A2	scale	1:1
tolerance std	TOLERANCES UNLESS OTHERWISE SPECIFIED	eng	Terry Luo	2017/01/19		←	ecn no	-	rel level	Released
ASME Y14.5M		chr	Heaven Cen	2017/01/19						
surface	linear	appr	Pei-Ming Zheng	2017/01/19	Amphenol FCI		title	ExaMAX R.A. RECEPTACLE	cat. no.	SEE TABLE
	angular						part no.	10124556	sheet	10 of 10

Amphenol FCI

© 2016 AFCI