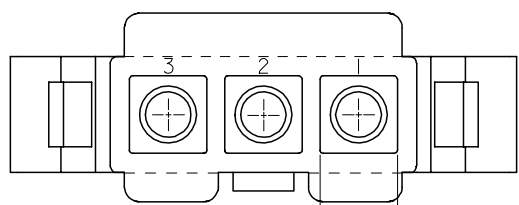
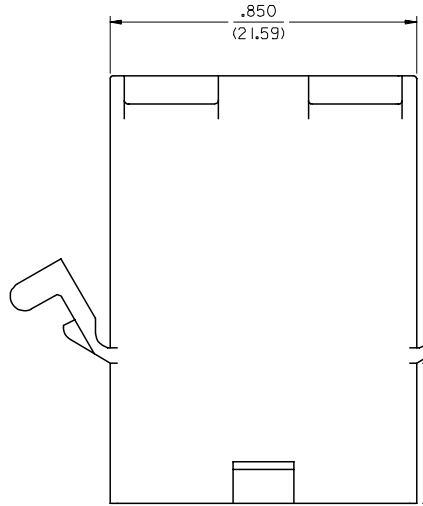


13 12 11 10 9 8 7 6 5 4 3 2 1

J
I
H
G
F
E
D
C
B
A



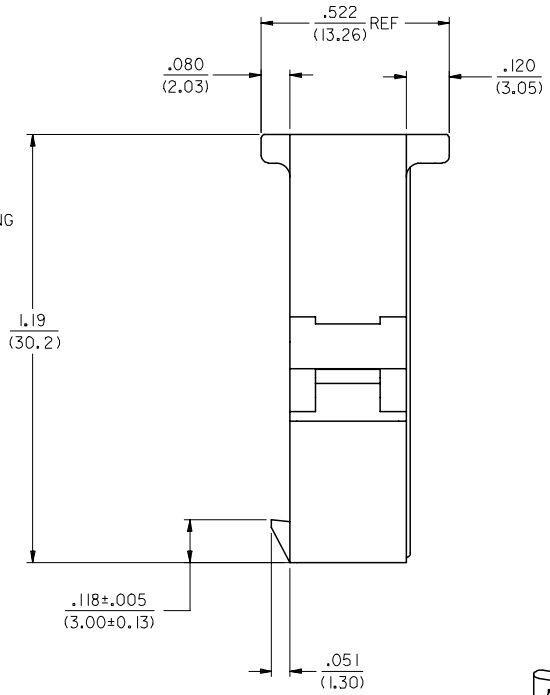
.215
(5.46) SQ, TYP



.850
(21.59)

OPTIONAL MOUNTING EARS, 2 PL. SEE DETAIL "A", SHT 3

.390
(9.91)



.080
(2.03)

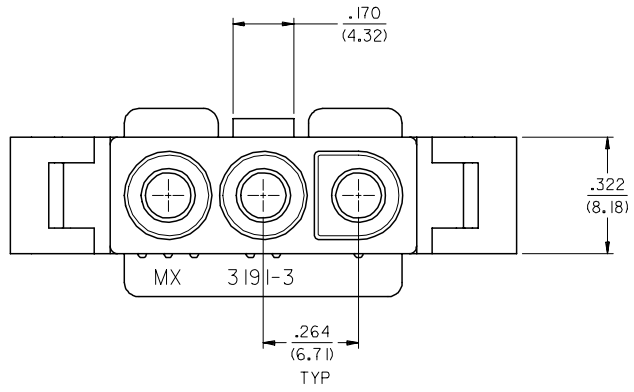
.522
(13.26) REF

.120
(3.05)

1.19
(30.2)

.118±.005
(3.00±0.13)

.051
(1.30)

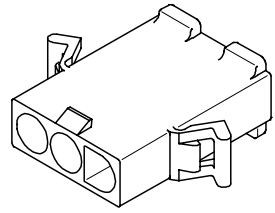


.170
(4.32)

.322
(8.18)

.264
(6.71) TYP

MX 3191-3



PLUG

3	A
2	A
1	A
SHT. REV.	

INITIAL RELEASE FCC NO: UCP2008-0136 DRAWN BY: UCP2008-0136 CHECKED BY: SCHMIDT APPROVED BY: FSM TH	DESCRIPTION 2007/07/25 2007/07/27 2007/07/27	QUALITY SYMBOLS ▽=0 ▽=0	GENERAL TOLERANCES (UNLESS SPECIFIED)		DIMENSION STYLE IN/MM		SCALE 4:1	DESIGN UNITS INCH	THIRD ANGLE PROJECTION
			4 PLACES ± --- ± --- 3 PLACES ± --- ± .010 2 PLACES ± 0.25 ± .015 1 PLACE ± 0.38 ± --- ANGULAR ±1/2°	mm INCH ± --- ± --- ± .010 ± .015 ± ---	DRAWN BY AELHAG	DATE 2007/06/27	TITLE .093/(2.36) HOUSING PLUG AND RECEPTACLE, 3 CKT .264/(6.71) CTRS.		
DRAFT WHERE APPLICABLE MUST REMAIN WITHIN DIMENSIONS			SEE CHART		APPROVED BY FSM TH DATE 2007/07/20		MATERIAL NO. DOCUMENT NO. MOLEX INCORPORATED		SHEET NO. 1 OF 3

12 11 10 9 8 7 6 5 4 3 2 1

13 12 11 10 9 8 7 6 5 4 3 2 1

PLUG			RECEPTACLE		
PART NO.	ENG. NO.		PART NO.	ENG. NO.	
50-36-1722	3191-3P1-1		50-36-1689	3191-3R1-1	

LEGEND

3191-3****-*

CIRCUIT SIZE

P = PLUG

R = RECEPTACLE

EARS: BLANK = WITH PREBENT EARS (PLUG ONLY)

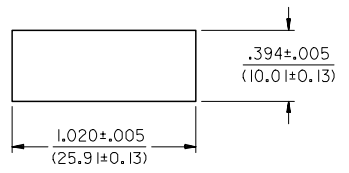
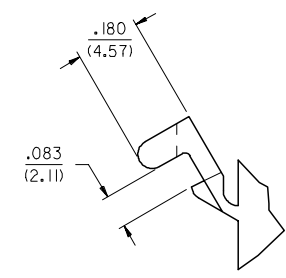
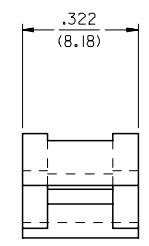
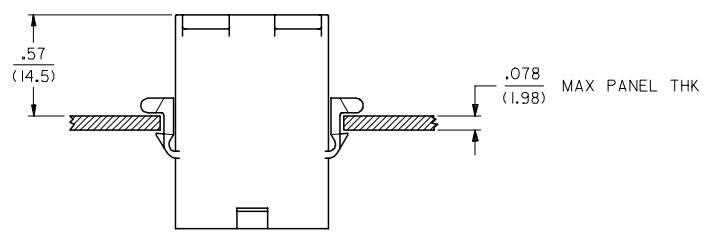
I = WITHOUT EARS

COLOR: NOT APPLICABLE

MATERIAL:
1: CODE B.

NOTES:

1. MATERIAL: B = NYLON (PA 6), UL94 V-0, IEC 60335-1, 4TH EDITION GLOW WIRE CAPABLE; COLOR: BLACK
2. FINISH: NONE
3. PRODUCT SPECIFICATION: PS-02-08
4. PACKAGING SPECIFICATION: PK-3191-001
5. PARTS CONFORM TO CLASS B REQUIREMENTS OF COSMETIC SPECIFICATION PS-45499-002 EXCEPT SINK AND DISCOLORATION MEETS CLASS 'C' REQUIREMENTS.



RECOMMENDED HOLE CUTOUT

DETAIL "A"
PREBENT MOUNTING EAR
(SCALE 4:1)

B
A

INITIAL RELEASE EC NO: UCP2008-0136 DRWNL: SCHMIDT 2007/07/25 CHKD: SCHMIDT 2007/07/27 APPR: FSM TH 2007/07/27 REVISION DESCRIPTION A	QUALITY SYMBOLS	GENERAL TOLERANCES (UNLESS SPECIFIED) <table border="1"> <thead> <tr> <th></th> <th>mm</th> <th>INCH</th> </tr> </thead> <tbody> <tr> <td>4 PLACES</td> <td>± .010</td> <td>± .0004</td> </tr> <tr> <td>3 PLACES</td> <td>± .015</td> <td>± .0006</td> </tr> <tr> <td>2 PLACES</td> <td>± 0.25</td> <td>± .010</td> </tr> <tr> <td>1 PLACE</td> <td>± 0.38</td> <td>± .015</td> </tr> </tbody> </table> ANGULAR ±1/2°		mm	INCH	4 PLACES	± .010	± .0004	3 PLACES	± .015	± .0006	2 PLACES	± 0.25	± .010	1 PLACE	± 0.38	± .015	DIMENSION STYLE IN/MM	SCALE ---	DESIGN UNITS INCH	THIRD ANGLE PROJECTION
			mm	INCH																	
	4 PLACES		± .010	± .0004																	
	3 PLACES		± .015	± .0006																	
2 PLACES	± 0.25	± .010																			
1 PLACE	± 0.38	± .015																			
DRAWN BY AELHAG	DATE 2007/06/27	TITLE .093/(2.36) HOUSINGS, PLUG AND RECEPTACLE, 3 CKT .264/(6.71) CTRS.																			
CHECKED BY SCHMIDT	DATE 2007/07/19	APPROVED BY FSM THROEMER																			
DATE 2007/07/20	MATERIAL NO.	DOCUMENT NO. SD-3191-3**1																			
DRAFT WHERE APPLICABLE MUST REMAIN WITHIN DIMENSIONS		SEE CHART	SHEET NO. 3 OF 3																		

12 11 10 9 8 7 6 5 4 3 2 1