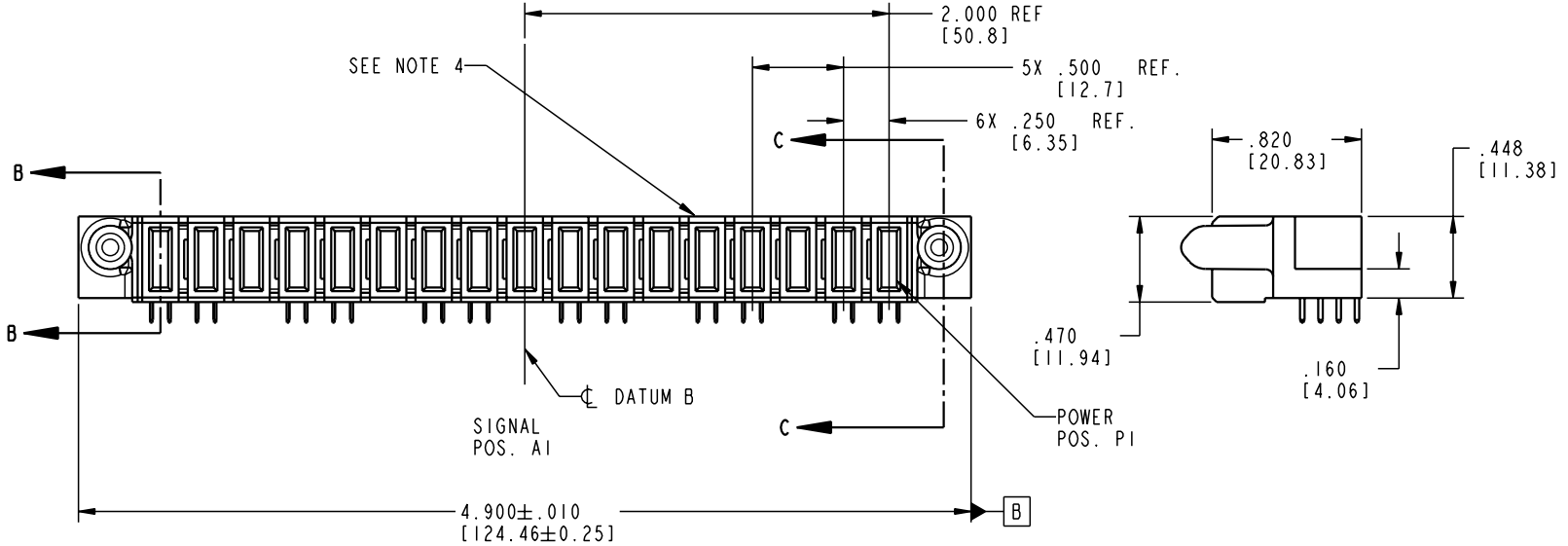
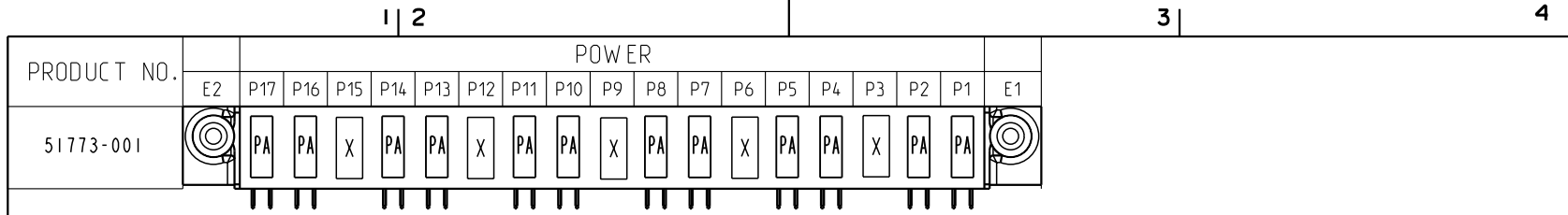


Tous droits strictement réservés. Reproduction ou communication a des tiers interdite sous quelque forme que ce soit sans autorisation écrite du propriétaire. Propriete de c FCI. Droits de reproduction FCI.

All rights strictly reserved. Reproduction or issue to third parties in any form whatever is not permitted without written authority from the proprietor. Property of FCI. Copyright FCI.



CODE	DIM "M" MATING LENGTH	CONTACT TYPE
PA	.042 [1.07]	POWER
X	OMITTED	OMITTED

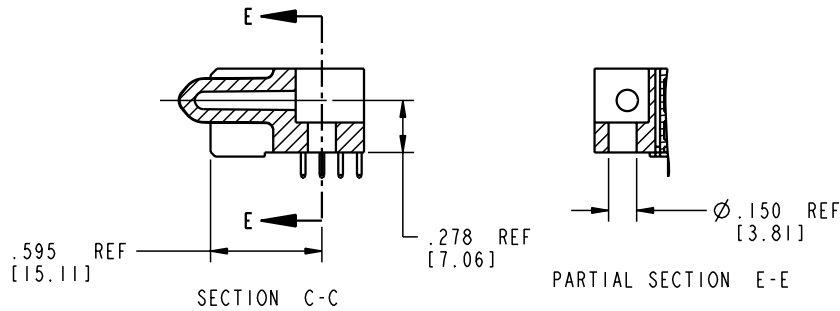
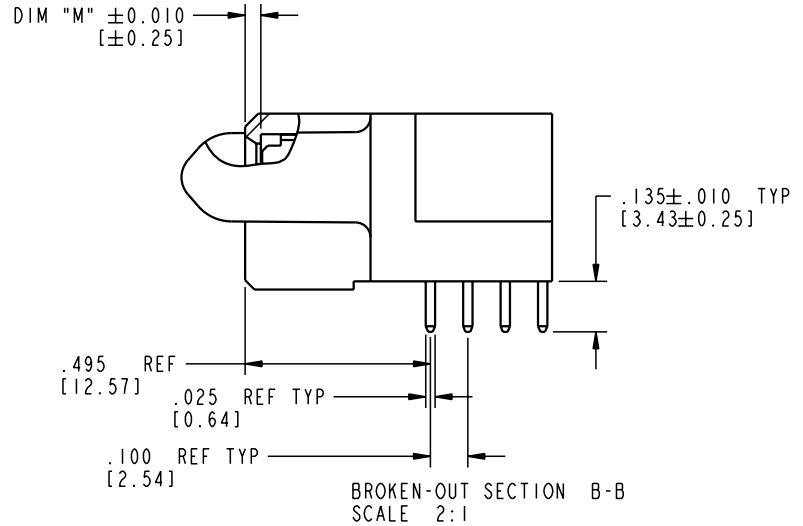
mat'l code				SEE NOTE 2		tolerances unless otherwise specified		CUSTOMER		 www.fciconnect.com	
lfr	ecr no.	dr	date	linear	XX ± .01/0.X ± 0.3	projection	COPY		title		
A	V21912	MEM	12/30/02	angles	.XXX ± .005/0.XX ± 0.13	 INCH/MM	A		17P		
				dr	.XXX ± .002/0.XXX ± 0.051		R/A SOLDER RECEPTACLE		product family		
				enr	M. MOSTOLLER 12/30/02	scale		PwrBlade		code	
				chr	M. MOSTOLLER 12/30/02	1:1		size		213	
				appd	H. BREWBAKER 12/30/02			A		51773-001	
					M. MOSTOLLER 12/30/02					sheet	
sheet index	revision sheet	A	A	A	A					1 of 4	
1	2	3	4								

Pro/E 3 cage code 22526 4

Tous droits strictement réservés. Reproduction ou communication a des tiers interdite sous quelque forme que ce soit sans autorisation écrite du propriétaire. Propriété de c FCI. Droits de reproduction FCI.

All rights strictly reserved. Reproduction or issue to third parties in any form whatever is not permitted without written authority from the proprietor. Property of FCI. Copyright FCI.

PRODUCT NUMBER  
51773-001



mat'l code				SEE NOTE 2		tolerances unless otherwise specified		CUSTOMER		 www.fciconnect.com	
lfr	ecn no.	dr	date	linear	$XX \pm .01 / 0.X \pm 0.3$ $.XXX \pm .005 / 0.XX \pm 0.13$ $.XXX \pm .0020 / 0.XXX \pm 0.051$	projection	COPY		title		
A				angles	$0^\circ \pm 2^\circ$				17P R/A SOLDER RECEPTACLE		
				dr	M. MOSTOLLER 12/30/02			product family		PwrBlade	code
				enr	M. MOSTOLLER 12/30/02			size		dwg no	213
				chr	H. BREWBAKER 12/30/02			A		51773-001	sheet
				appd	M. MOSTOLLER 12/30/02						2 of 4
sheet index		revision sheet									

Pro/E

cage code 22526

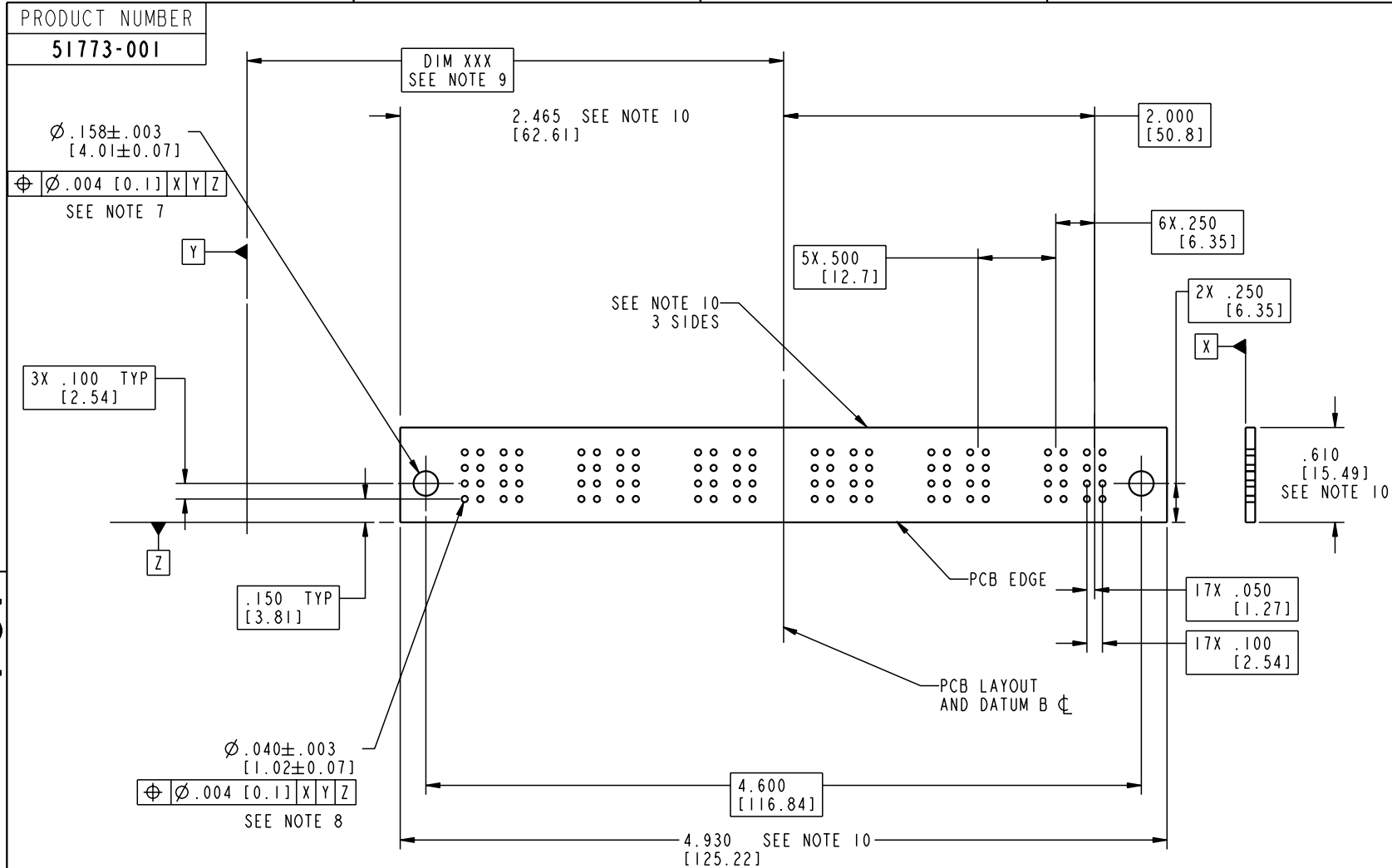
PDM: Rev:A

STATUS: Released

Printed: Dec 20, 2010

Tous droits strictement réservés. Reproduction ou communication a des tiers interdite sous quelque forme que ce soit sans autorisation écrite du propriétaire. Propriété de c FCI. Droits de reproduction FCI.

All rights strictly reserved. Reproduction or issue to third parties in any form whatever is not permitted without written authority from the proprietor. Property of FCI. Copyright FCI.



mat'l code		SEE NOTE 2		tolerances unless otherwise specified		CUSTOMER		 www.fciconnect.com	
lfr	ecr no.	dr	date	linear	$XX \pm .01 / 0.X \pm 0.3$ $XXX \pm .005 / 0.XX \pm 0.13$ $.XXX \pm .0020 / 0.XXX \pm 0.051$	projection	title		
A				angles	$0^\circ \pm 2^\circ$		I7P		
				dr	M. MOSTOLLER 12/30/02	 INCH/MM scale 1:1	product family		code
				enr	M. MOSTOLLER 12/30/02		PwrBlade		213
				chr	H. BREWBAKER 12/30/02		size		sheet
				appd	M. MOSTOLLER 12/30/02		A 51773-001		3 of 4
sheet index	revision sheet						cage code	22526	

Pro/E

Tous droits strictement réservés. Reproduction ou communication a des tiers interdite sous quelque forme que ce soit sans autorisation écrite du propriétaire. Propriété de c FCI. Droits de reproduction FCI.

All rights strictly reserved. Reproduction or issue to third parties in any form whatever is not permitted without written authority from the proprietor. Property of FCI. Copyright FCI.

1 | 2

3 |

4

PRODUCT NUMBER

51773-001

NOTES:


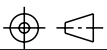
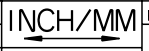
1. DIMENSIONS AND TOLERANCES ARE IN ACCORDANCE WITH ASME Y14.5M, 1994 UNLESS OTHERWISE SPECIFIED.

CONNECTOR NOTES:

- 2. HOUSING MATERIAL: UL 94 V-0 GLASS FILLED  
HIGH-TEMP THERMOPLASTIC  
POWER CONTACT MATERIAL: COPPER ALLOY  
SIGNAL PIN MATERIAL: COPPER ALLOY
- 3. PLATING:  
SIGNAL PINS: 30u"/0.76um Au OVER 50u"/1.27um Ni  
POWER CONTACTS: 50u"/1.27um Ni UNDER ALL  
WITH 30u"/0.76um Au ON CONTACT AREA  
AND SnPb ON PCB INTERFACE
- 4. MANUFACTURER'S NAME, P/N, AND DATE CODE TO APPEAR ON THIS SURFACE.
- 5. PRODUCT SPECIFICATION GS-12-149.  
APPLICATION SPECIFICATION BUS-20-067.  
PACKAGED IN TRAYS.)

PCB NOTES:

- 6. ALL HOLE DIAMETERS ARE FINISHED HOLE SIZE.
- 7. MOUNTING HOLES, WHERE APPLICABLE, ARE UNPLATED.
- 8.  $\varnothing .0453 \pm .0010$  [1.151  $\pm$  0.025] DRILLED HOLES PLATED WITH .0003 [0.008] MIN SnPb OVER .001 [0.03] TO .003 [0.08] Cu PLATING TO ACHIEVE  $\varnothing .040 \pm .003$  [1.02  $\pm$  .07] HOLE.
- 9. "DIM XXX" TO BE DETERMINED BY THE CUSTOMER.
- 10. CONNECTOR KEEP-OUT ZONE.

mat'l code		SEE NOTE 2		tolerances unless otherwise specified		CUSTOMER		 www.fciconnect.com		
lfr	ecr no.	dr	date	linear	$XX \pm .01 / 0.X \pm 0.3$ $XXX \pm .005 / 0.XX \pm 0.13$ $.XXX \pm .0020 / 0.XXX \pm 0.051$	projection			title	17P R/A SOLDER RECEPTACLE
A				angles	$0^\circ \pm 2^\circ$		product family	PwrBlade	code	213
				dr	M. MOSTOLLER 12/30/02	scale	A	51773-001	sheet	4 of 4
				enr	M. MOSTOLLER 12/30/02	1:1				
				chr	H. BREWBAKER 12/30/02					
				appd	M. MOSTOLLER 12/30/02					
sheet index	revision sheet									

1 | 2

Pro/E

3 |

cage code 22526

4

PDM: Rev:A

STATUS: Released

Printed: Dec 20, 2010