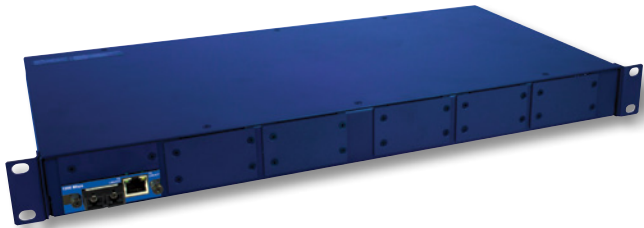


Ethernet-based, Modular Media Converters Chassis

MediaConverter/12



PRODUCT FEATURES

- Supports Ethernet, Fast Ethernet, and Gigabit Ethernet
- Supports McPIMs, McLIMs, and McGigabit modules
- Table-top or rackmountable
- 12-slot chassis
- AC power (dual)
- Modular, hot-swappable architecture reduces operational costs associated with product installation, upgrades and maintenance

Your network is growing and many new access points, workstations, etc. are required. However, legacy equipment, along with your existing wiring infrastructure, must work with any new equipment you implement in your network. When copper-to-fiber conversions are required, along with advanced troubleshooting features, our MediaConverter/12 is the perfect solution.

The unmanaged B&B Electronics' MediaConverter/12 enables you to easily and cost-effectively connect one type of media to other dissimilar media or networking products. This series increases the functionality and extends the productive life of both your legacy cabling infrastructure and networking equipment when adding fiber to your network.

ORDERING INFORMATION

MODEL NUMBER	DESCRIPTION
--------------	-------------

MediaConverter/12	
--------------------------	--

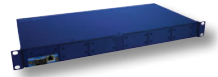
851-10912	12 Slot
-----------	---------

ACCESSORIES

806-39040 - Power Supply, 40x-AC (40 Watt, 100-240V AC)

Ethernet-based, Modular Media Converters Chassis

MediaConverter/12



SPECIFICATIONS

TECHNICAL

12 slot chassis can house the following modules: McPIM, McLIM, McLIM 10/100, McGigabit

Dual AC power supplies (included)

Fits into a 19" Rack

MECHANICAL

Dimensions 1.72"H x 17.4"W x 9"D
(4.36cm H x 44.19cm W x 22.86cm D)

Shipping Weight 11.0 lbs (5 kg)

POWER AC

115/230 or 120/240 VAC, 50/60Hz, 1.2A/0.6A

ENVIRONMENTAL

Operating Temperature: +32° to +122° F (0° to +50° C)

DC Terminal Block

Storage Temperature: 13° to +158° F (-25° to +70° C)

Operating Humidity 5% to 95% (non-condensing),
0 – 10,000 ft. altitude

REGULATORY APPROVALS

FCC Class A, UL/CUL, CE, CSA

MECHANICAL DIAGRAM

(dimensions in inches)

