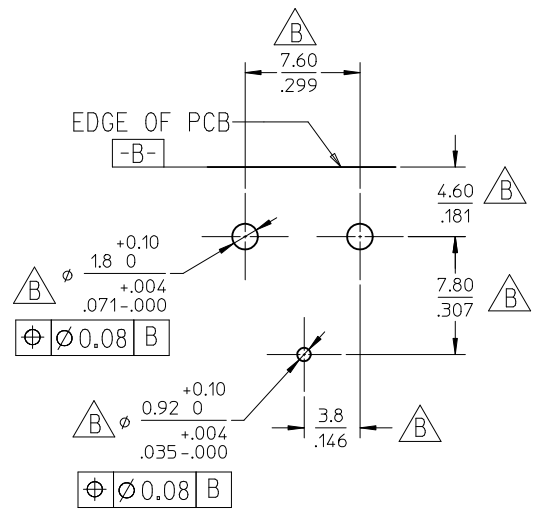
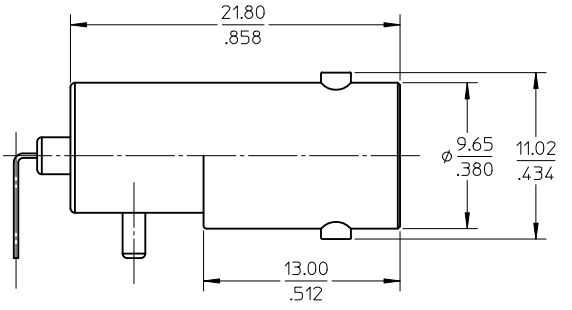
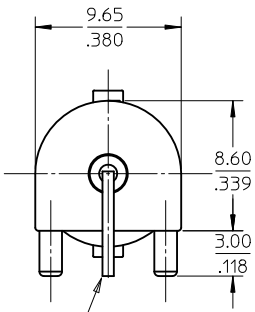


MATERIALES AND FINISHES

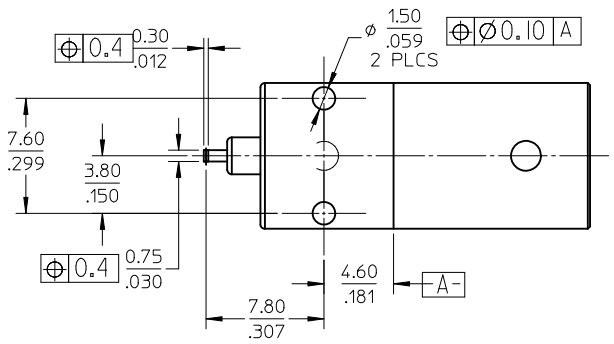
- BODY ZINC ALLOY
PLATED TIN
- CENTER CONTACT PHOSPHOR BRONZE
PLATED GOLD / TIN
- INSULATOR POLYPROPYLENE



RECOMMENDED PCB PATTEPN



THIS LEAD IS FORMED TO FIT
RECOMMENDED PCB PATTERN
DURING INSTALLATION



BOTTOM VIEW

73171-4230	ONE PER BAG
73100-0154	TRAY
PART NO.	PACKAGING


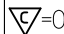

PS-89675-1030	PRODUCT SPECIFICATIONS
SPECIFICATION	DESCRIPTION

CHG: ADD -4230 EC NO: URF2011-0634 DRWN: JWIENER 2011/04/27 CHKD: SSS 2011/04/27 APPR: JWIENER 2011/05/02	QUALITY SYMBOLS	GENERAL TOLERANCES (UNLESS SPECIFIED) mm INCH 4 PLACES ± --- ± --- 3 PLACES ± --- ± --- 2 PLACES ± 0.25 ± --- 1 PLACE ± 0.25 ± --- ANGULAR ± ---°	DIMENSION STYLE	SCALE	DESIGN UNITS	THIRD ANGLE PROJECTION	
			MM/IN		METRIC		
				DRAWN BY	DATE	TITLE	
				CHECKED BY	DATE		
		APPROVED BY	DATE	BNC JACK R/A PCB 50 OHM BNC-JPCB			
				MOLEX INCORPORATED			
				MATERIAL NO.	DOCUMENT NO.	SHEET NO.	
				SEE TABLE	SD-73100-0154	1 OF 1	
				THIS DRAWING CONTAINS INFORMATION THAT IS PROPRIETARY TO MOLEX INCORPORATED AND SHOULD NOT BE USED WITHOUT WRITTEN PERMISSION			

MATERIALS AND FINISHES

SEE SD-73100-0154

P/N: 73171-4230: THIS IS P/N: 73100-0154 PLACED IN A SINGLE BAG

CHG: NEW RELEASE EC NO: URF2011-0634 DRWN: JWIENER 2011/04/29 CHKD: SSS 2011/04/29 APPR: JWIENER 2011/05/02	QUALITY SYMBOLS  = 0  = 0	GENERAL TOLERANCES (UNLESS SPECIFIED)		DIMENSION STYLE MM/IN		SCALE	DESIGN UNITS METRIC	THIRD ANGLE PROJECTION																													
		<table border="1"> <thead> <tr> <th></th> <th>mm</th> <th>INCH</th> </tr> </thead> <tbody> <tr> <td>4 PLACES</td> <td>± ---</td> <td>± ---</td> </tr> <tr> <td>3 PLACES</td> <td>± ---</td> <td>± ---</td> </tr> <tr> <td>2 PLACES</td> <td>± ---</td> <td>± ---</td> </tr> <tr> <td>1 PLACE</td> <td>± ---</td> <td>± ---</td> </tr> <tr> <td colspan="3">ANGULAR ± ---°</td> </tr> </tbody> </table>		mm	INCH	4 PLACES	± ---	± ---	3 PLACES	± ---	± ---	2 PLACES	± ---	± ---	1 PLACE	± ---	± ---	ANGULAR ± ---°			<table border="1"> <thead> <tr> <th>DRAWN BY</th> <th>DATE</th> </tr> </thead> <tbody> <tr> <td>JWIENER</td> <td>2011/04/29</td> </tr> <tr> <th>CHECKED BY</th> <th>DATE</th> </tr> <tr> <td>SSS</td> <td>2011/04/29</td> </tr> <tr> <th>APPROVED BY</th> <th>DATE</th> </tr> <tr> <td>JWIENER</td> <td>2011/05/02</td> </tr> </tbody> </table>	DRAWN BY	DATE	JWIENER	2011/04/29	CHECKED BY	DATE	SSS	2011/04/29	APPROVED BY	DATE	JWIENER	2011/05/02	TITLE BNC JACK R/A PCB THRU-HOLE 50 OHMS BNC-JPCB EWR-N/A		 MOLEX INCORPORATED	
	mm	INCH																																			
4 PLACES	± ---	± ---																																			
3 PLACES	± ---	± ---																																			
2 PLACES	± ---	± ---																																			
1 PLACE	± ---	± ---																																			
ANGULAR ± ---°																																					
DRAWN BY	DATE																																				
JWIENER	2011/04/29																																				
CHECKED BY	DATE																																				
SSS	2011/04/29																																				
APPROVED BY	DATE																																				
JWIENER	2011/05/02																																				
A	REV	DRAFT WHERE APPLICABLE MUST REMAIN WITHIN DIMENSIONS		SIZE C	THIS DRAWING CONTAINS INFORMATION THAT IS PROPRIETARY TO MOLEX INCORPORATED AND SHOULD NOT BE USED WITHOUT WRITTEN PERMISSION																																