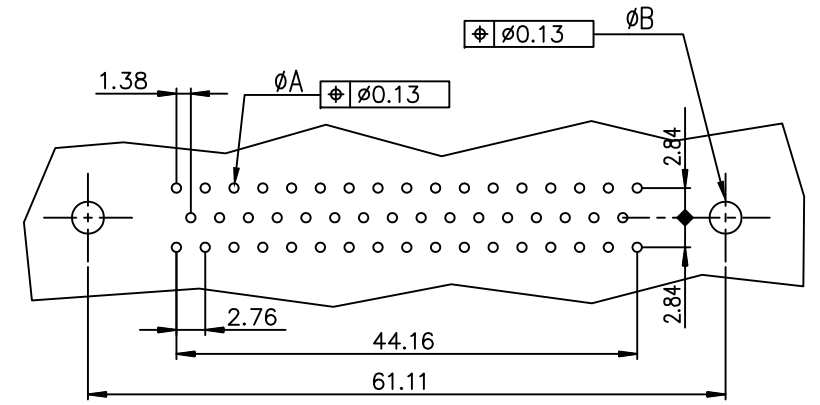


PC board drilling dimensions
(after plating – thickness: 1.60 to 3.20 mm)



ROHS PART NUMBER	
PART NUMBER	
200 Mating	D50P91C4GV00LF
500 Mating	D50P91C6GV00LF

GENERAL CHARACTERISTICS AND ROHS INFORMATIONS:
SEE DRAWING C01-8646-0001

mat'l. code		surface ISO 1302		tolerance ISO 406 ISO 1101		projection		product family D-SUB	
ltr		ecn no		dr		date		title	
E	LS06-0074	MPE	2006-05-09	angles	linear	.0±0.1	mm	MALE CONNECTOR DELTA D 50	
F	LS06-0097	LGO	2006-07-29	0°±2'	.00±0.1	STRAIGHT PRESS FIT			
G	LS06-0140	LGO	2006-09-22		.000±0.1	scale 2:1			
H	111-0062	MINI	2011-04-04	dr	PESSON	1995-10-03	dwg no sheet 1 of 1 size		
J	ELX-I-24020	AAB	2016-06-06	eng	MITHUN PAUL	2016-06-06	C01-8646-0256 A3		
				chr	ATHUL A.B	2016-06-06	type Product Customer Drawing		
				appd	BIJU K PAUL	2016-06-06			
sheet index	revision sheet	J	1						

Amphenol FCI

© 2016 AFCI