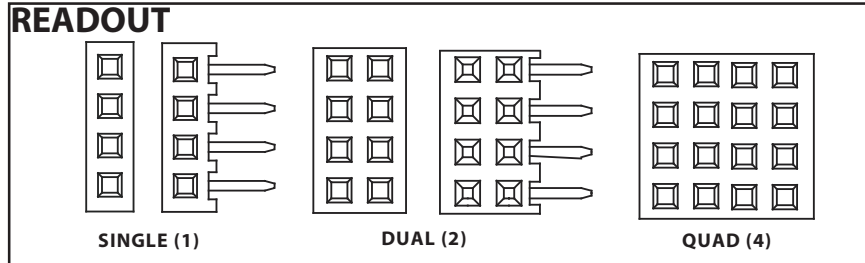




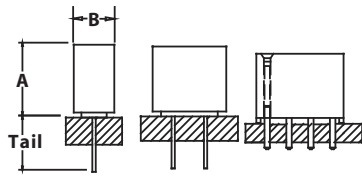
**.079" [2 mm] Contact Centers, Female Header
Dip Solder/Right Angle/SMT**

SPECIFICATIONS

- 1 amp current rating per contact
- UL Flammability Rating: 94V-O
- Insulator: Black Thermoplastic Polyester/Nylon 6-T
- Contact Material: Phosphor Bronze

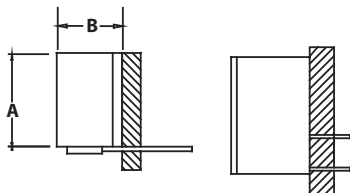


TERMINATION TYPE



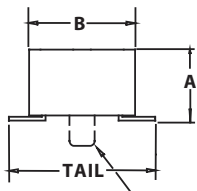
STRAIGHT

P/N CODE	ROWS	TERM	A	B	TAIL
BFC	1	STRAIGHT	.173 [4.40]	.094 [2.40]	.094 [2.40]
AFC	2	STRAIGHT	.170 [4.30]	.157 [4.00]	.094 [2.40]
AFE	2	STRAIGHT	1.70 [4.30]	.157 [4.00]	.110 [2.80]
EFC	4	STRAIGHT	.248 [6.30]	.315 [8.00]	.094 [2.40]



RIGHT ANGLE

P/N CODE	ROWS	TERM	A	B	TAIL
FGG	1	RIGHT ANGLE	.169 [4.30]	.110 [2.80]	.122 [3.10]
FJF	2	RIGHT ANGLE	.285 [7.20]	.191 [4.85]	.118 [3.00]



SMT

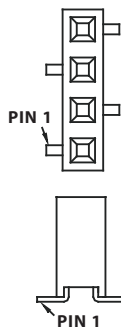
P/N CODE	ROWS	TERM	A	B	TAIL
BFL	1	SMT	.181 [4.60]	.094 [2.40]	.157 [4.00]
GFN	2	SMT	.110 [2.80]	.165 [4.20]	.228 [5.80]
GHN	Replaced by GFN				
FFK	2	SMT	.173 [4.40]	.157 [4.00]	.228 [5.80]

Refer to Mounting Style

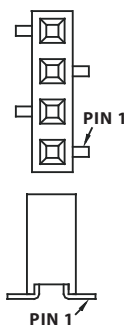
MOUNTING STYLE



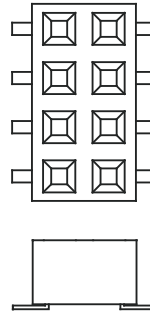
No Mounting-Standard (N)



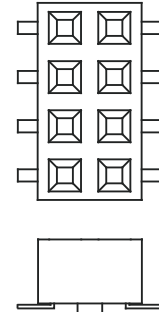
One Row SMT, Pin 1 Left (C)



One Row SMT, Pin 1 Right (D)



Two Row SMT, Without Guide Posts (S)



Two Row SMT, With Guide Post (P)



**.079" [2 mm] Contact Centers, Female Header
Dip Solder/Right Angle/SMT**

PART NUMBER OPTIONS

NP P N 40 1 BFC N - RC

PLASTIC HOUSING
NP = Nylon 6-T/Phosphor Bronze

CONTACT FINISH - RoHS Compliant
Contact Termination
P = Gold Flash Gold Flash (For 1 and 2 Row)
R = .000020" Gold .000100" Tin (For 4 row)

CONTACT CENTERS
N = .079" [2.00mm]

NUMBER OF POSITIONS
Positions Available
2 Thru 40 = AFC, AFE, BFL, FFK, FGG, FJF
3 Thru 40 = BFC, GFN
5 Thru 30 = EFC

NUMBER OF ROWS (Opposite Page)
1 = One Row
2 = Two Row
4 = Four Row

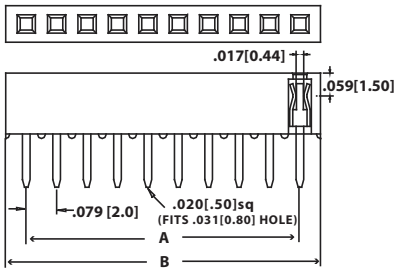
RoHS COMPLIANT
Consult Factory For Modifications

MOUNTING STYLE
N = No Mounting
C = SMT, Single row female, pin 1 Left
D = SMT, Single row female, pin 1 Right
P = Surface mount with guide pins
S = Surface mount without guide pins

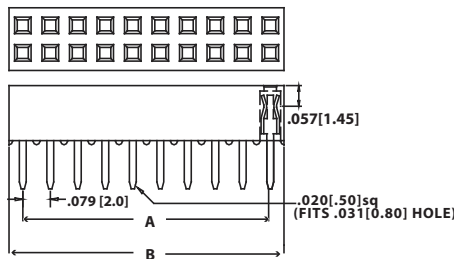
TERMINATION TYPE (Opposite Page)
AFC = Thru Hole Top Entry
AFE = Thru Hole Top Entry/Closed Bottom
BFC = Thru Hole Top Entry
EFC = Thru Hole Top Entry
FGG = R/A Top Entry
FJF = R/A Top Entry
BFL = SMT Top Entry
FFK = SMT Top Entry
GFN = SMT Top/Bottom Entry
GHN = SMT Replaced by GFN

DIMENSIONS

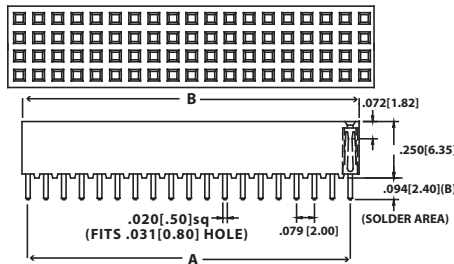
Dimensions in [] are in millimeters, all others are in inches.



**SINGLE READOUT,
STRAIGHT TAIL SHOWN**



**DUAL READOUT,
STRAIGHT TAIL SHOWN**



**QUAD READOUT,
STRAIGHT TAIL SHOWN**

PART NUMBER	NUMBER OF CONTACTS SINGLE/DUAL/ QUAD	CENTER TO CENTER LENGTH [A]		OVERALL LENGTH [B]	
		INCHES	[MM]	INCHES	[MM]
PN02 N-RC	02/04	0.079	2.00	0.157	4.00
PN03 N-RC	03/06	0.157	4.00	0.236	6.00
PN04 N-RC	04/08	0.236	6.00	0.315	8.00
PN05 N-RC	05/10/20	0.315	8.00	0.394	10.00
PN06 N-RC	06/12/24	0.394	10.00	0.472	12.00
PN07 N-RC	07/14/28	0.472	12.00	0.551	14.00
PN08 N-RC	08/16/32	0.551	14.00	0.630	16.00
PN09 N-RC	09/18/36	0.630	16.00	0.709	18.00
PN10 N-RC	10/20/40	0.709	18.00	0.787	20.00
PN11 N-RC	11/22/44	0.787	20.00	0.866	22.00
PN12 N-RC	12/24/48	0.866	22.00	0.945	24.00
PN13 N-RC	13/26/52	0.945	24.00	1.024	26.00
PN14 N-RC	14/28/54	1.024	26.00	1.102	28.00
PN15 N-RC	15/30/60	1.102	28.00	1.181	30.00
PN16 N-RC	16/32/64	1.181	30.00	1.260	32.00
PN17 N-RC	17/34/68	1.260	32.00	1.339	34.00
PN18 N-RC	18/36/72	1.339	34.00	1.417	36.00
PN19 N-RC	19/38/76	1.417	36.00	1.496	38.00
PN20 N-RC	20/40/80	1.496	38.00	1.575	40.00
PN21 N-RC	21/42/84	1.575	40.00	1.654	42.00
PN22 N-RC	22/44/88	1.654	42.00	1.732	44.00
PN23 N-RC	23/46/92	1.732	44.00	1.811	46.00
PN24 N-RC	24/48/96	1.811	46.00	1.890	48.00
PN25 N-RC	25/50/100	1.890	48.00	1.969	50.00
PN26 N-RC	26/52/104	1.969	50.00	2.047	52.00
PN27 N-RC	27/54/108	2.047	52.00	2.126	54.00
PN28 N-RC	28/56/112	2.126	54.00	2.205	56.00
PN29 N-RC	29/58/116	2.205	56.00	2.283	58.00
PN30 N-RC	30/60/120	2.283	58.00	2.362	60.00
PN31 N-RC	31/62	2.362	60.00	2.441	62.00
PN32 N-RC	32/64	2.441	62.00	2.520	64.00
PN33 N-RC	33/66	2.520	64.00	2.598	66.00
PN34 N-RC	34/68	2.598	66.00	2.677	68.00
PN35 N-RC	35/70	2.677	68.00	2.756	70.00
PN36 N-RC	36/72	2.756	70.00	2.835	72.00
PN37 N-RC	37/74	2.835	72.00	2.913	74.00
PN38 N-RC	38/76	2.913	74.00	2.992	76.00
PN39 N-RC	39/78	2.992	76.00	3.071	78.00
PN40 N-RC	40/80	3.071	78.00	3.150	80.00