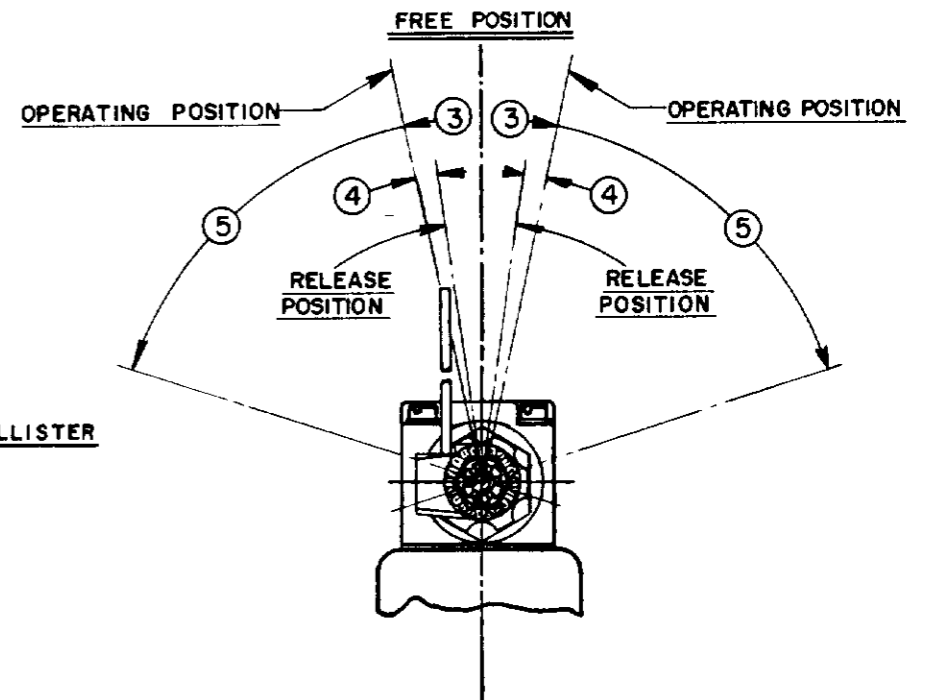
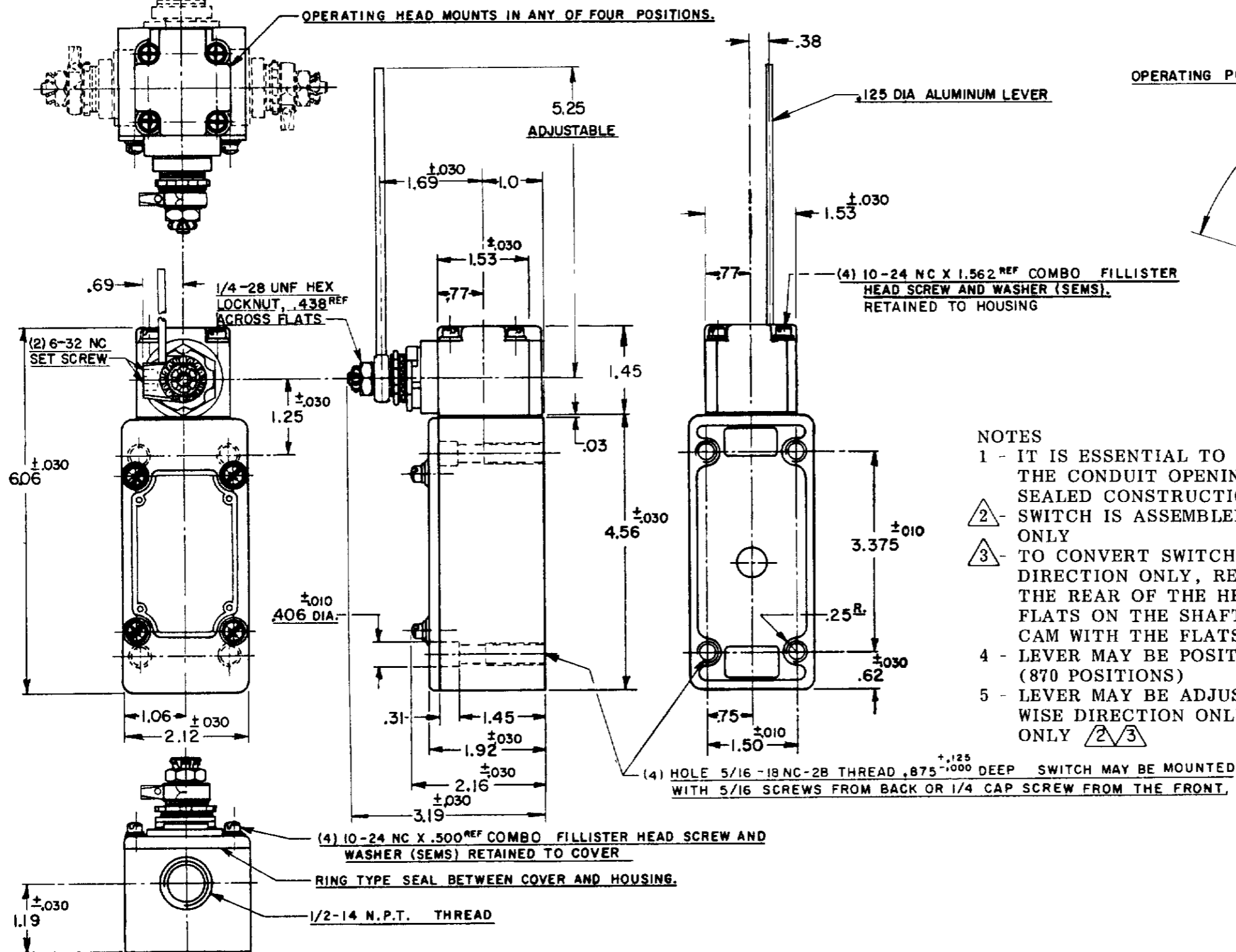


**51ML10**  
 DRAWING NUMBER  
 M  
 ISSUE 10  
 REVISIONS  
 A C052194 J A P 26 SEPT 83  
 B C055051-B J A P 17 DEC 84  
 C D074287 B A W 17 APR 93  
 DRAWN J A P 26 SEPT 83  
 CHECK E C 30 SEPT 83  
 CHECK J A P 26 SEPT 83  
 74-963



**NOTES**

1 - IT IS ESSENTIAL TO PREVENT ENTRANCE OF HARMFUL AGENTS THRU THE CONDUIT OPENING TO OBTAIN THE FULL BENEFIT OF THE SEALED CONSTRUCTION PROVIDED IN THIS UNIT

2 - SWITCH IS ASSEMBLED FOR ACTUATION IN CLOCKWISE DIRECTION ONLY

3 - TO CONVERT SWITCH FOR ACTUATION IN THE COUNTER-CLOCKWISE DIRECTION ONLY, REMOVE THE HEAD AND SLIDE THE CAM TOWARD THE REAR OF THE HEAD SUFFICIENTLY TO DISENGAGE FROM THE FLATS ON THE SHAFT. ROTATE THE CAM 180° AND RE-ENGAGE THE CAM WITH THE FLATS ON THE SHAFT

4 - LEVER MAY BE POSITIVELY LOCKED AT INTERVALS OF APPROX 0.4° (870 POSITIONS)

5 - LEVER MAY BE ADJUSTED TO ACTUATE THE SWITCH IN THE CLOCKWISE DIRECTION ONLY OR THE COUNTER-CLOCKWISE DIRECTION ONLY

CHARACTERISTICS	ELECTRICAL DATA	SCALE 1/2 TO 1
OPERATING FORCE ----- 5 OZ. MAX	CONTACT ARRANGEMENT S. P D T.	DO NOT SCALE PRINT
FULL OVERTRAVEL FORCE ----- 7 OZ MAX	BREAK DISTANCE	UNLESS OTHERWISE SPECIFIED
RELEASE FORCE ----- 3/4 OZ. MIN.	20 A-120,240,480 OR 600 VAC; 3/4 HP-120 VAC.	DIMENSIONS ARE IN INCHES
PRETRAVEL ----- ③ 12° MAX.	1-1/2 HP-240 VAC; 1/2 A-115 VDC; 1/4 - 230 VDC	<b>TOLERANCES ARE:</b>
DIFFERENTIAL TRAVEL ----- ④ 4° MAX	PILOT DUTY RATING-600 VAC MAX.	ONE PLACE ( 0 ) ±.030
OVERTRAVEL ----- ⑤ 60° MIN.		TWO PLACE ( 00 ) ±.018
SWITCH-BASIC REPLACEMENT IMK5		THREE PLACE ( .000 ) ±.008
		ANGLES ±
		WEIGHT