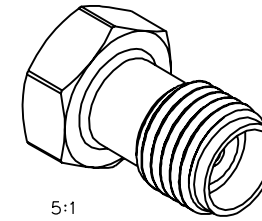
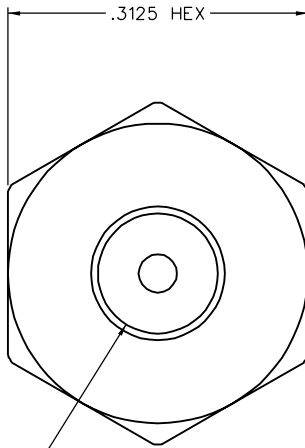


PART NUMBER 140-0000-982	ITEM ① FIXTURE STAINLESS STEEL PASSIVATED	APPLICATION SMA THICKWALL PLUG 142-0694-051/060 142-0693-061/070 142-0694-061/070
-----------------------------	--	---

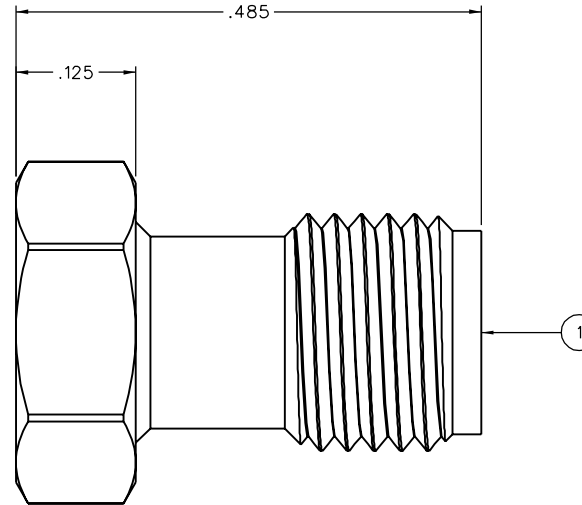
DRAWING NO. C - 140-0000-982				
0 REVISIONS				
ENGINEERING RELEASE				
1	12-13-04	R	J	3-9-05 ECN 49583



5:1



Ø.125 X .300 DEEP



NOTES:


- THIS FIXTURE IS TO BE USED AS AN AID DURING THE SOLDERING PROCESS OF ATTACHING AN SMA THICKWALL PLUG CONNECTOR TO A CABLE OR PC BOARD. THE FIXTURE PROTECTS THE MATING END OF THE CONNECTOR FROM DAMAGE AND ALSO MAINTAINS THE PROPER LOCATION OF THE CONNECTOR INSULATOR WHILE HEAT IS APPLIED DURING SOLDERING. TO USE THE FIXTURE, THREAD THE COUPLING NUT OF THE CONNECTOR ONTO MATING END OF THE FIXTURE, AND TIGHTEN TO A MAXIMUM OF 8 IN-LBS MATING TORQUE. THIS ASSEMBLY CAN NOW BE HELD IN A VICE OR SIMILAR CLAMPING DEVICE. ALLOW THE CONNECTOR TO COOL DOWN AFTER SOLDERING BEFORE REMOVING THE FIXTURE.

CUSTOMER DRAWING

THIS DRAWING TO BE INTERPRETED
PER ANSII Y 14.5M - 1982

"μ STATION"

COMPANY CONFIDENTIAL

TOLERANCE UNLESS OTHERWISE SPECIFIED	DRAWN BY JRK	DATE 12-6-04	 Cinch Connectivity Solutions P.O. Box 1732 Waseca, MN 56093 1-800-247-8256
DECIMALS mm	CHECKED BY JCN	DATE 12-13-04	
.XXX REF	APPROVED BY TJS	DATE 12-22-04	TITLE SMA PLUG THICKWALL ASSEMBLY LOCATION SOLDERING TOOL
MATL	RELEASE DATE 3-9-05	SHEET 2 OF 2	DRAWING NO. C - 140-0000-982
FINISH	U/M INCH SCALE 10:1		