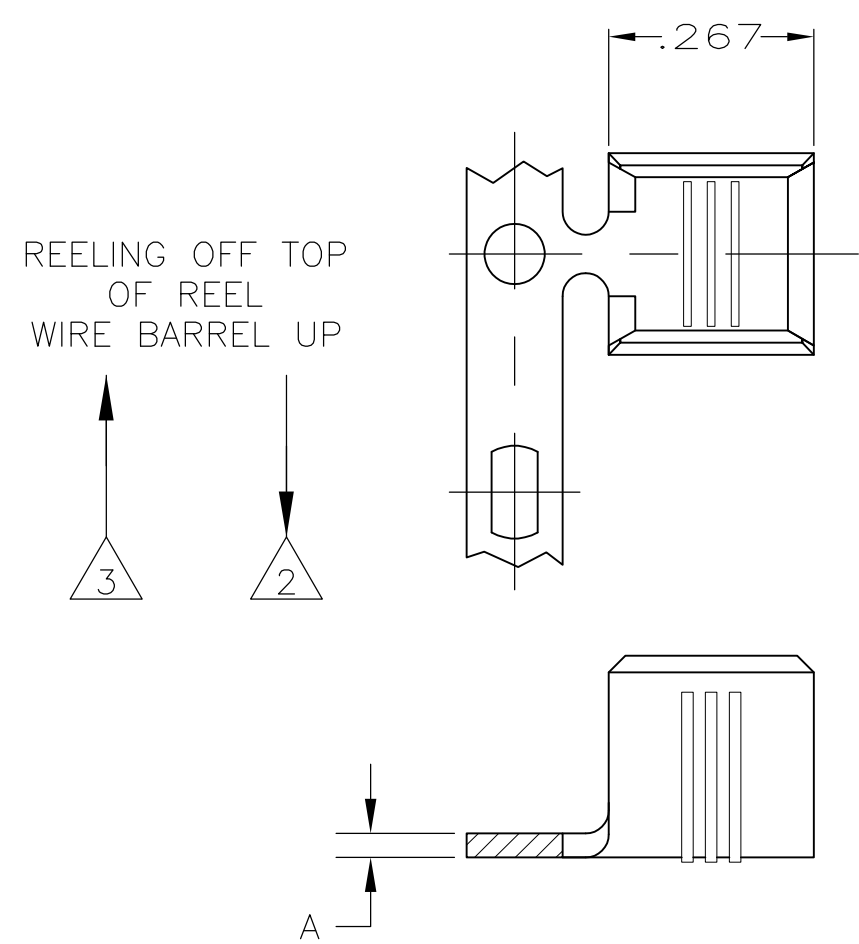
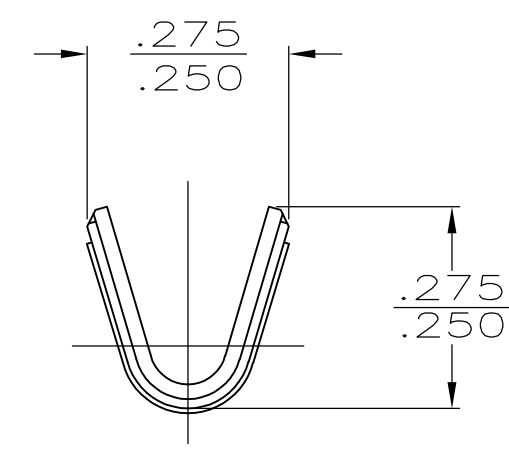


THIS DRAWING IS UNPUBLISHED. RELEASED FOR PUBLICATION
 © COPYRIGHT - By - ALL RIGHTS RESERVED.

| LOC | DIST | REVISIONS | | | | | |
|-----|------|-----------|-----|---------------------------|---------|-----|------|
| AF | 50 | P | LTR | DESCRIPTION | DATE | DWN | APVD |
| | | S1 | | REVISED PER ECO-11-005027 | 11MAR11 | RK | HMR |



- 1 PRODUCT PROVIDED IN STRIP FORM ON REELS; BREAKS MAY BE PRESENT
- 2 STANDARD REELING.
- 3 REVERSE REELING.
- 4 CRIMP WIDTH: .180 F TYPE
 CRIMP HEIGHT: (±.002) = (TOTAL CMA + 28,300) / 289,800
 FOR APPLICATOR INFORMATION CALL: 1-800-722-1111
 FOR PRODUCT INFORMATION CALL: 1-800-522-6752
- 5 WIRE RANGE FOR NEW APPLICATIONS: 7000-12,000 CMA
 (WIRE RANGE APPROVED FOR APPLICATIONS IMPLEMENTED PRIOR TO 2005: 9000-16,000 CMA).



| | | | | | |
|---------|-----------|---------------|--------|----------|-------------|
| 3 | .031±.001 | 5 | TIN | STEEL | 61299-8 |
| | | | NONE | BRASS | 61299-3 |
| 2 | .032±.001 | 5 | TIN | STEEL | 61299-2 |
| | .031±.001 | | | | 61299-1 |
| REELING | A | CMA WIRE SIZE | FINISH | MATERIAL | PART NUMBER |

THIS DRAWING IS A CONTROLLED DOCUMENT.

| | | | |
|--------------------|--|-----------------------------------|---------------------------|
| DIMENSIONS: INCHES | TOLERANCES UNLESS OTHERWISE SPECIFIED: | DWN 19DEC2002 MICHAEL S. FEHER | TE Connectivity SPLICE |
| | 0 PLC ± - 1 PLC ± - 2 PLC ± - 3 PLC ± .010 4 PLC ± - ANGLES ± - | CHK 19DEC2002 GARY PORTA | |
| | | APVD 19DEC2002 GARY PORTA | |
| MATERIAL SEE TABLE | FINISH SEE TABLE | PRODUCT SPEC - | |

| | | | | | |
|------------------|------------------|-----------|--------------|------------|---------------|
| APPLICATION SPEC | NAME | SIZE | CAGE CODE | DRAWING NO | RESTRICTED TO |
| 114-2088 | | A3 | 00779 | C-61299 | - |
| WEIGHT - | CUSTOMER DRAWING | SCALE 4:1 | SHEET 1 OF 1 | REV S1 | |