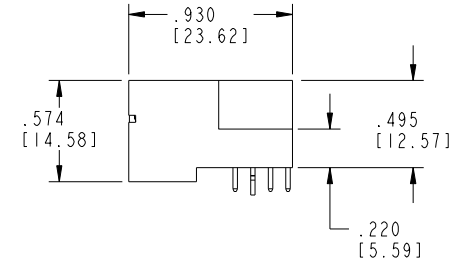
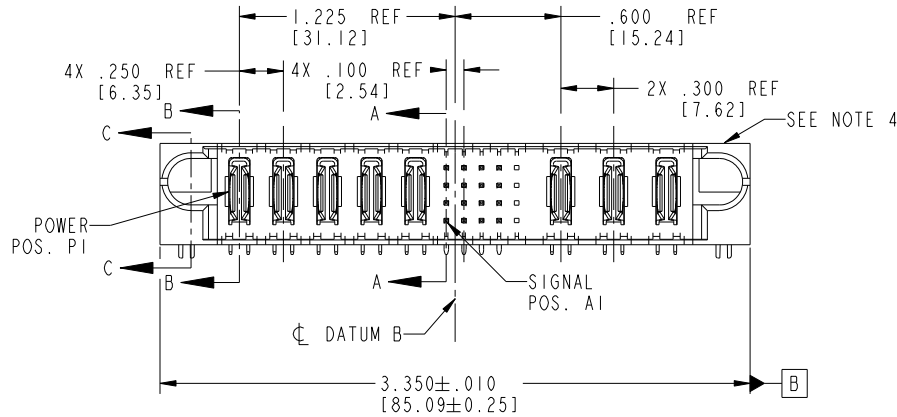
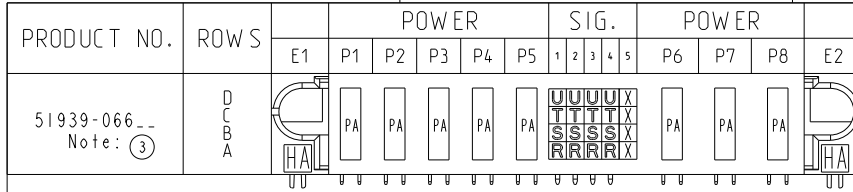


Tous droits strictement reserves. Reproduction ou communication a des tiers interdite sous quelque forme que ce soit sans autorisation écrite du propriétaire. Propriete de c FCI. Droits de reproduction FCI.



All rights strictly reserved. Reproduction or issue to third parties in any form whatever is not permitted without written authority from the proprietor. Property of FCI. Copyright FCI.



CODE	DIM "M" MATING LENGTH	CONTACT TYPE
R	.270 [6.86]	SIGNAL
S	.270 [6.86]	SIGNAL
T	.270 [6.86]	SIGNAL
U	.270 [6.86]	SIGNAL
PA	N/A [N/A]	POWER
HA	N/A [N/A]	HOLD-DOWN
X	OMITTED	

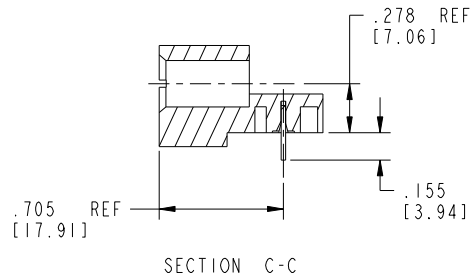
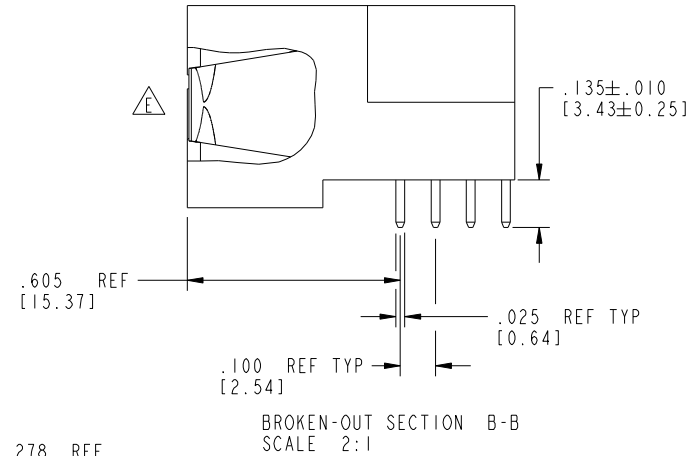
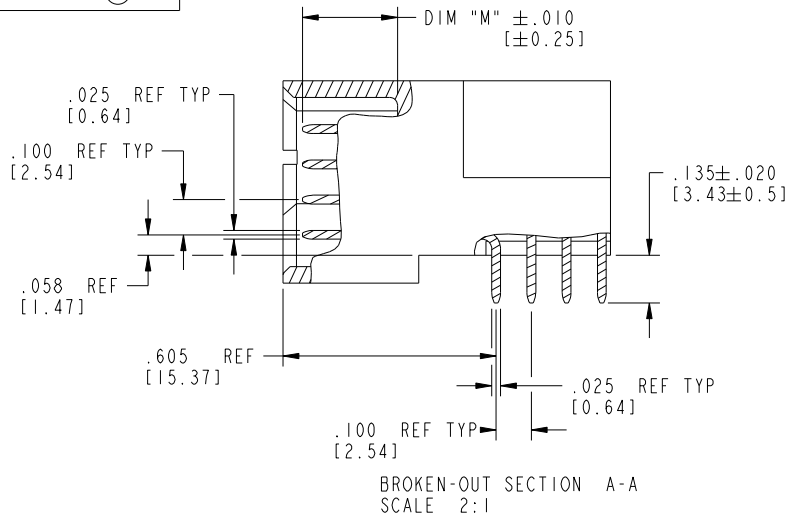
mat'l code SEE NOTE 2				tolerances unless otherwise specified		CUSTOMER		 www.fciconnect.com	
ltr	ecn no.	dr	date	linear	.XX±.01/0.X±0.3	COPY		title	
A	V03-0596	MEM	5/27/03		.XXX±.005/0.XX±0.13	projection		5P + 20S + 3ACP	
B	V03-0629	TAB	6/03/03	angles	.XXX±.0020/0.XXX±0.051			RIGHT ANGLE SOLDER HEADER	
C	DG05-0168	SJ	06/17/05		0°±2°	INCH/MM		product family PwrBlade code	
D	DG06-0014	JMG	01/11/06	dr	M. MOSTOLLER 5/27/03	scale		size	
E	DG08-0273	WD	12/31/08	enrg	M. MOSTOLLER 5/27/03	1:1		dwg no	
				chr	H. BREWBAKER 5/27/03			213	
				appd	M. MOSTOLLER 5/27/03			sheet	
								1 of 4	
sheet index	revision sheet	E	E	E	E				
		1	2	3	4				

cage code 22526

Tous droits strictement réservés. Reproduction ou communication à des tiers interdite sous quelque forme que ce soit sans autorisation écrite du propriétaire. Propriété de c.FCI. Droits de reproduction FCI.

All rights strictly reserved. Reproduction or issue to third parties in any form whatsoever is not permitted without written authority from the proprietor. Property of FCI. Copyright FCI.

PRODUCT NUMBER
51939-066--
Note: ③



mat'l code		SEE NOTE 2		tolerances unless otherwise specified		CUSTOMER		FCI	
lfr	ecn no.	dr	date	linear	.XX±.01/0.X±0.3	COPY		www.fciconnect.com	
E				projection	.XXX±.005/0.XX±0.13	title		5P + 20S + 3ACP	
				angles	.XXX±.0020/0.XXX±0.051	RIGHT ANGLE SOLDER HEADER		product family	
				dr	0°±2°	INCH/MM		PwrBlade	
				engr	M. MOSTOLLER 5/27/03	scale		code	
				chr	M. MOSTOLLER 5/27/03	1:1		213	
				appd	H. BREWBAKER 5/27/03	A		sheet	
					M. MOSTOLLER 5/27/03	51939-066		2 of 4	
sheet index	revision sheet								

cage code 22526

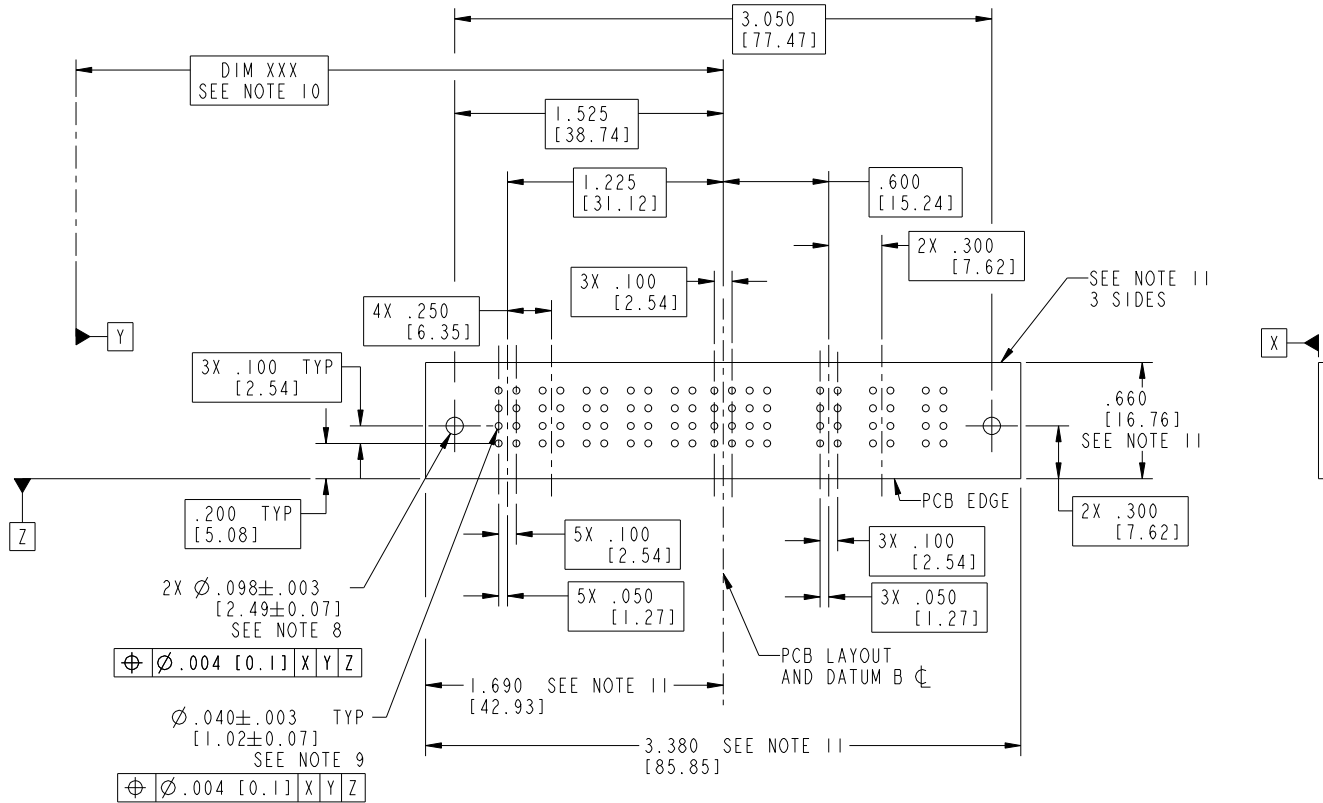
Pro/E

Tous droits strictement reserves. Reproduction ou communication a des tiers interdite sous quelque forme que ce soit sans autorisation ecrite du proprietaire. Propriete de c FCI. Droits de reproduction FCI.



All rights strictly reserved. Reproduction or issue to third parties in any form whatever is not permitted without written authority from the proprietor. Property of FCI. Copyright FCI.

PRODUCT NUMBER
51939-066__
Note: ③



RECOMMENDED PCB LAYOUT

mat'l code		SEE NOTE 2		tolerances unless otherwise specified		CUSTOMER		 www.fciconnect.com	
ltr	ecn no.	dr	date	linear	.XX±.01/0.X±0.3	COPY		title	
E					.XXX±.005/0.XX±0.13	projection		5P + 20S + 3ACP	
				angles	.XXX±.0020/0.XXX±0.051			RIGHT ANGLE SOLDER HEADER	
				dr	0°±2°	INCH/MM		product family	
				engr	M. MOSTOLLER 5/27/03	scale		PwrBlade	
				chr	M. MOSTOLLER 5/27/03	1:1		code	
				appd	H. BREWBAKER 5/27/03	A		213	
					M. MOSTOLLER 5/27/03	size		sheet	
sheet index	revision sheet					dwg no		3 of 4	
						51939-066			

cage code 22526

Pro/E

Tous droits strictement reserves. Reproduction ou communication a des tiers interdite sous quelque forme que ce soit sans autorisation écrite du propriétaire. Propriete de c FCI. Droits de reproduction FCI.



All rights strictly reserved. Reproduction or issue to third parties in any form whatever is not permitted without written authority from the proprietor. Property of FCI. Copyright FCI.

PRODUCT NUMBER
51939-066__
Note: ③

NOTES:

1. DIMENSIONS AND TOLERANCES ARE IN ACCORDANCE WITH ASME Y14.5M, 1994 UNLESS OTHERWISE SPECIFIED.

CONNECTOR NOTES:

2. HOUSING MATERIAL: UL 94 V-0 GLASS FILLED HIGH-TEMP THERMOPLASTIC
POWER CONTACT MATERIAL: COPPER ALLOY
SIGNAL PIN MATERIAL: COPPER ALLOY

⚠ 3. SEE ITEM 1 & 2 IN PRINT 10064183 FOR PLATING SPEC OF 51939-066 AND 51939-066LF RESPECTIVELY.

4. MANUFACTURER'S NAME, P/N, AND DATE CODE TO APPEAR ON THIS SURFACE.

5. PRODUCT SPECIFICATION GS-12-149.
APPLICATION SPECIFICATION BUS-20-067.

6. PACKAGED IN TRAYS.

PCB NOTES:

7. ALL HOLE DIAMETERS ARE FINISHED HOLE SIZE.

8. MOUNTING HOLES, WHERE APPLICABLE, ARE UNPLATED.

9. $\varnothing .0453 \pm .0010$ [1.151 ± 0.025] DRILLED HOLES PLATED WITH
.0003 [0.008] MIN SnPb OVER .001 [0.03]
TO .003 [0.08] Cu PLATING TO ACHIEVE
 $\varnothing .040 \pm .003$ [1.02 ± .07] HOLE.

10. "DIM XXX" TO BE DETERMINED BY THE CUSTOMER.

11. CONNECTOR KEEP-OUT ZONE.

12. ⚠ SYMBOL WILL BE NEXT TO ANY DIMENSION, VIEW, OR NOTE WHICH HAS BEEN MODIFIED WITH THE CURRENT DRAWING REVISION.

mat'l code		SEE NOTE 2		tolerances unless otherwise specified		CUSTOMER		FCI		www.fciconnect.com	
ltr	ecn no.	dr	date	linear	.XX±.01/0.X±0.3	COPY					
E				projection	.XXX±.005/0.XX±0.13			title 5P + 20S + 3ACP			
				angles	.XXX±.002/0.XXX±0.051			RIGHT ANGLE SOLDER HEADER			
				dr	0° ± 2°	INCH/MM		product family PwrBlade		code 213	
				enrg	M. MOSTOLLER 5/27/03	scale		size dwg no		sheet 4 of 4	
				chr	M. MOSTOLLER 5/27/03	1:1		A 51939-066			
				appd	M. MOSTOLLER 5/27/03						
sheet index		revision sheet									

cage code 22526

Pro/E